

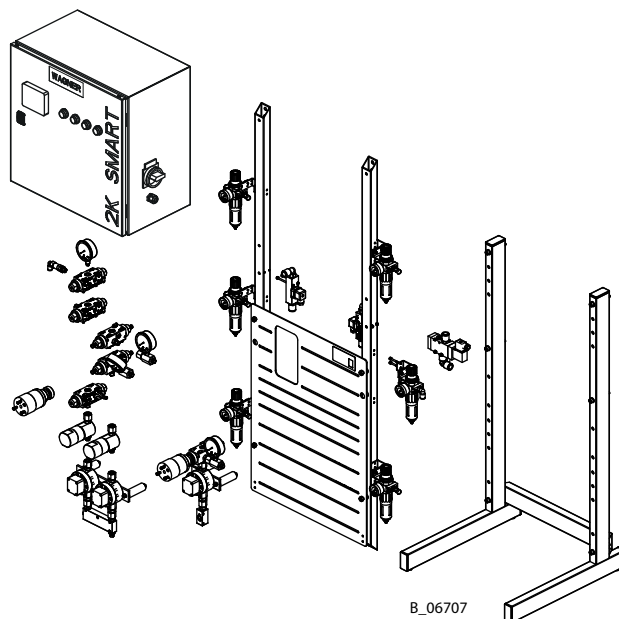


Spare parts catalog

2K SMART

Version 04/2017

**Electronically Controlled
Multi-component System
for Lacquers**



CE

CE Ex II (2)G

CE Ex II 2G c IIB X

B_06707

Table of Contents

1	ABOUT THESE INSTRUCTIONS	5
1.1	Preface	5
1.2	Warnings, Notices and Symbols in these Instructions	5
1.3	Languages	6
1.3.1	Operating Documents for Individual Components	6
1.4	2K SMART USB Stick	7
1.5	Abbreviations	7
2	SPARE PARTS	8
2.1	How Can Spare Parts Be Ordered?	8
2.2	Expansion and Accessory Sets	9
3	SYSTEM OVERVIEW	10
4	FRAME, STANDS AND ROLLERS	16
4.1	Frame Set, 500	16
4.2	Stands	17
4.3	Rollers	17
5	BASE MODULE	18
5.1	Base Module, Non-Ex	18
5.2	Base Module, Ex	20
5.3	Filter Regulator	22
6	CONTROL CABINET	23
6.1	Overview of Control Cabinet	24
6.1.1	Electrical Connections	25
6.2	Control Cabinet Spare Parts List	26
6.2.1	Push-buttons and Main Switch	28
6.2.2	Electrical Connection Cable for USA	28
6.2.3	Alarm Horn	29
6.2.4	Fuses	29
6.2.5	CAN I/O Module	30
7	PAINT AND DOSING VALVES	31
7.1	Paint Valves / Flushing Valves for Component A	31
7.2	Dosing Valves / Flushing Valves for Components B and C	32
7.3	Flushing Agent Distributor	33
7.4	Product Pressure Gauge	34
8	PRODUCT FILTER	35
9	FLOW METERS	36
9.1	Gear Flow Meters	36
9.1.1	Flow Meter Mount	36
9.1.2	Gear Flow Meters 0.02–3 GL, 0.02–3 KL and 0.005–2 GL	37
9.1.3	Gear Flow Meters 0.005 - 0.5 KL and 0.1-7 GL	38
9.1.4	Gear Flow Meter 0.005–1 GL Dual Pickup	39
9.1.5	Cable Set for Gear Flow Meter	40
9.2	Coriolis Flow Meters	41
9.2.1	Coriolis Flow Meter, 0.075–5	41
9.2.2	Mounting Bracket Coriolis-Compact 2	42
9.2.3	Cable Set for Coriolis	43

Table of Contents

10	MIXER	44
10.1	Mixing Block	44
10.2	Mixing Head Valve or External Mixer	45
10.3	Stroke Measurement Systems	45
10.3.1	Mixing Block Fastener	45
10.3.2	Components A/B	46
10.4	Mixing Tubes	47
10.5	Splitter Valve without Valves	49
11	HOSES AND FITTINGS	50
11.1	Mixing Hoses	50
11.2	Product Hoses Made of PA	51
11.3	Product Hoses Made of FEP	51
11.4	Fittings	52
12	MISCELLANEOUS	53
12.1	Electro-pneumatic Valves for Explosive Areas	53
12.2	Connection Set (Hoses and Cables)	54
12.2.1	Multiple Coupling for 8 Air Hoses	54

1 ABOUT THESE INSTRUCTIONS


1.1 PREFACE

This spare part catalog contains information about the structure and the assembly of the device and its accessories.
 The spare parts catalog is part of the corresponding operating manual.
 Always follow both documents when using the device.
 This equipment can be dangerous, if it is not operated in accordance with the data in the operating manual and in the spare parts catalog.
 Observance of these documents is a prerequisite for the guarantee agreements.


1.2 WARNINGS, NOTICES AND SYMBOLS IN THESE INSTRUCTIONS

Warning instructions in this operating manual highlight particular dangers to users and to the device and state measures for avoiding the hazard. These warning instructions fall into the following categories:


Danger - immediate risk of danger.
 Non-observance will result in death or serious injury.

	⚠ DANGER
	This notice warns you of a hazard! Possible consequences of not observing the warning instructions. The signal word indicates the hazard level. → The measures for preventing the hazard and its consequences.

Warning - possible imminent danger.
 Non-observance may result in death or serious injury.

	⚠ WARNING
	This notice warns you of a hazard! Possible consequences of not observing the warning instructions. The signal word indicates the hazard level. → The measures for preventing the hazard and its consequences.

Caution - a possibly hazardous situation.
 Non-observance may result in minor injury.

	⚠ CAUTION
	This notice warns you of a hazard! Possible consequences of not observing the warning instructions. The signal word indicates the hazard level. → The measures for preventing the hazard and its consequences.

Notice - a possibly hazardous situation.
 Non-observance may result in damage to property.

NOTICE
This notice warns you of a hazard! Possible consequences of not observing the warning instructions. The signal word indicates the hazard level. → The measures for preventing the hazard and its consequences.

Note - provides information about particular characteristics and how to proceed.

1.3 LANGUAGES

The spare parts catalog is available in the following languages:

2K SMART spare parts catalog	
Language	Order No.
German	2373082
English	2373083

Further 2K SMART operating documents:

2K SMART operating manual	
Language	Order No.
German	2373062
English	2373063
French	2373064
Spanish	2373067
Italian	2373066

2K SMART software documentation	
Language	Order No.
German	2373080
English	2373081

Additional languages on request or at: www.wagner-group.com

1.3.1 OPERATING DOCUMENTS FOR INDIVIDUAL COMPONENTS

Operating manual Paint valves (PV) and dosing valves (DV), GA (DN 2.6)	
Language	Order No.
German	2343270
English	2343275
French	2343276
Italian	2343277
Spanish	2343278

Operating manual Paint valves (PV) and dosing valves (DV), GA (DN 4)	
Language	Order No.
German	2336797
English	2336798
French	2336799
Italian	2336800
Spanish	2336801

Operating manual ADC-0301 / MPX-0403 (for stroke measurement)	
Language	Order No.
German	2382346
English	2382349
French	2382350
Italian	2382351
Spanish	2382352

User information Coriolis Compact	
Language	Order No.
German	2359722
English	2359725
French	2359727
Italian	2359728
Spanish	2359730

Operating manual Pressure regulator for lacquers T0170, T0180	
Language	Order No.
German	ZZB019GER
English	ZZB019ENG
French	ZZB019FRE
Italian	ZZB019ITA
Spanish	ZZB019SPA

2K Data software documentation	
Language	Order No.
German	2382353
English	2382354
The 2K Data software is contained on the 2K SMART USB stick (see Chapter 1.4).	
Purpose: Transfer system settings, names, paint and flushing recipes and the I/O configuration via USB stick to the PC. View or change data on the PC.	

2K Archive software documentation	
Language	Order No.
German	2361954
English	2361978
The 2K Archive software is available as an accessory.	
Purpose: Log and archive consumption data on the PC.	

Additional languages on request or at: www.wagner-group.com

1.4 2K SMART USB STICK

All operating documents specified above, as well as the accessory set's assembly manuals (with the description of the accessory's function) are also available as pdf files on a USB stick. The USB stick is included in the system's scope of delivery.



The **Order No.** is: 2373794 (specify additionally the Serial No. of the system)

1.5 ABBREVIATIONS

Abbreviation	Meaning
Stk	Number of pieces
Pos	Position
K	Marking in the spare parts lists
Order No.	Order number
ET	Spare part
1K	One component
2K	Two components
3K	Three components
DH	Double stroke
DN	Nominal diameter
HP	High pressure
HVLP	High Volume Low Pressure
AIS	Adaptive Injection System
AIS-B	AIS for component B
AIS-C	AIS for component C

Abbreviation	Meaning
P1	Spray gun 1
P2	Spray gun 2
GFB	Gun flush box
CAN	Controller Area Network – serial bus system in the control cabinet
I/O	Input/Output
Q	Flow
cc	Cubic centimeters (cm ³)
Materials	
PE	Polyethylene
PTFE	Polytetrafluorethylene
SSt	Stainless steel
TC	Carbide
UHMWPE	Ultra-high molecular weight polyethylene

2 SPARE PARTS

	 DANGER
<p>Incorrect assembly/installation! Danger to life and equipment damage.</p> <p>→ Only a WAGNER service center or a suitably trained person may carry out assembly and installation of parts.</p> <p>→ Only mount and replace parts that are listed in the scope of delivery or in the "Spare Parts" chapter and that are assigned to the device.</p> <p>→ Before all work on the device and in the event of work interruptions:</p> <ul style="list-style-type: none"> - Relieve pressure from spray guns and devices. - Secure spray guns against actuation. - Switch off the energy/compressed air supply. - Disconnect the control unit from the mains. <p>→ Observe the operating and service manual for all work.</p>	

2.1 HOW CAN SPARE PARTS BE ORDERED?

Always supply the following information to ensure delivery of the right spare part:

Order number, designation and quantity

The quantity need not be the same as the number given in the quantity column "**Stk**" on the list. This number merely indicates how many of the respective parts are used in each component.

The following information is also required to ensure smooth processing of your order:

- Address for the invoice
- Address for delivery
- Name of the person to be contacted in the event of any queries
- Type of delivery (normal mail, express delivery, air freight, courier etc.)

Identification in spare parts lists.

Explanation of column "**K**" (labeling) in the following spare parts lists:

- ◆ Wearing parts
Note: These parts are not covered by warranty terms.
- Not part of standard equipment, available, however, as additional extra.

Serial number

The parameters used by WAGNER and the special properties of each 2K SMART system are documented upon delivery and stored in the WAGNER archive.

If the customer wishes to modify the system or even prior to inspections, the technical customer service team must always be provided with the serial number of the system in question.

The serial number is located on the control cabinet. (For Ex systems, it is also located on the fluid section.)

2.2 EXPANSION AND ACCESSORY SETS

The 2K system is based on a modular design and can also be upgraded at a later stage with only a few exceptions.

Attention

Expansion and accessory sets, which need an input or an output (electronic or pneumatic) from the controller, must be obtained from WAGNER. Possibly, an additional output expansion module is necessary. The available inputs and outputs can be seen in the "2K SMART Connection Table" supplement. The supplement is delivered together with the system and must be adapted for each conversion.

Expansion and accessory sets

Order No.	→ See operating manual (accessories chapter).
Installation	→ Only have specially trained staff or a WAGNER service center install them. The corresponding assembly manual is to be observed during the installation (accessories chapter).
Spare Parts	→ The spare parts are listed in the relevant set's assembly manual. For the assembly manual's Order No., see Chapter 3.

All assembly manuals are also available on a USB stick. The USB stick is included in the system's scope of delivery.

3 SYSTEM OVERVIEW

Basic components	→ The spare parts are listed in the spare parts catalog (Chapter 4 – 12).
Expansion and accessory sets	→ The spare parts are listed in the corresponding assembly manual.

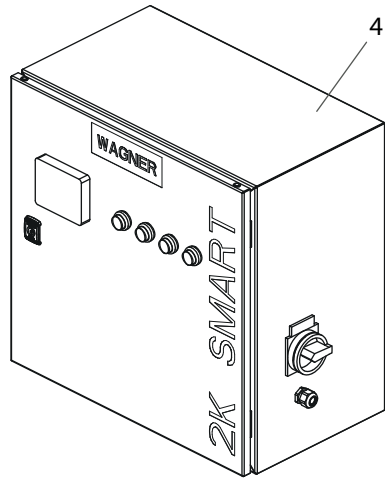
The following table shows where spare parts can be found: in which chapter of this spare parts catalog and / or in which assembly manual (with the Order No. of the assembly manual).

All assembly manuals can also be found on the USB stick, which is delivered together with the system.

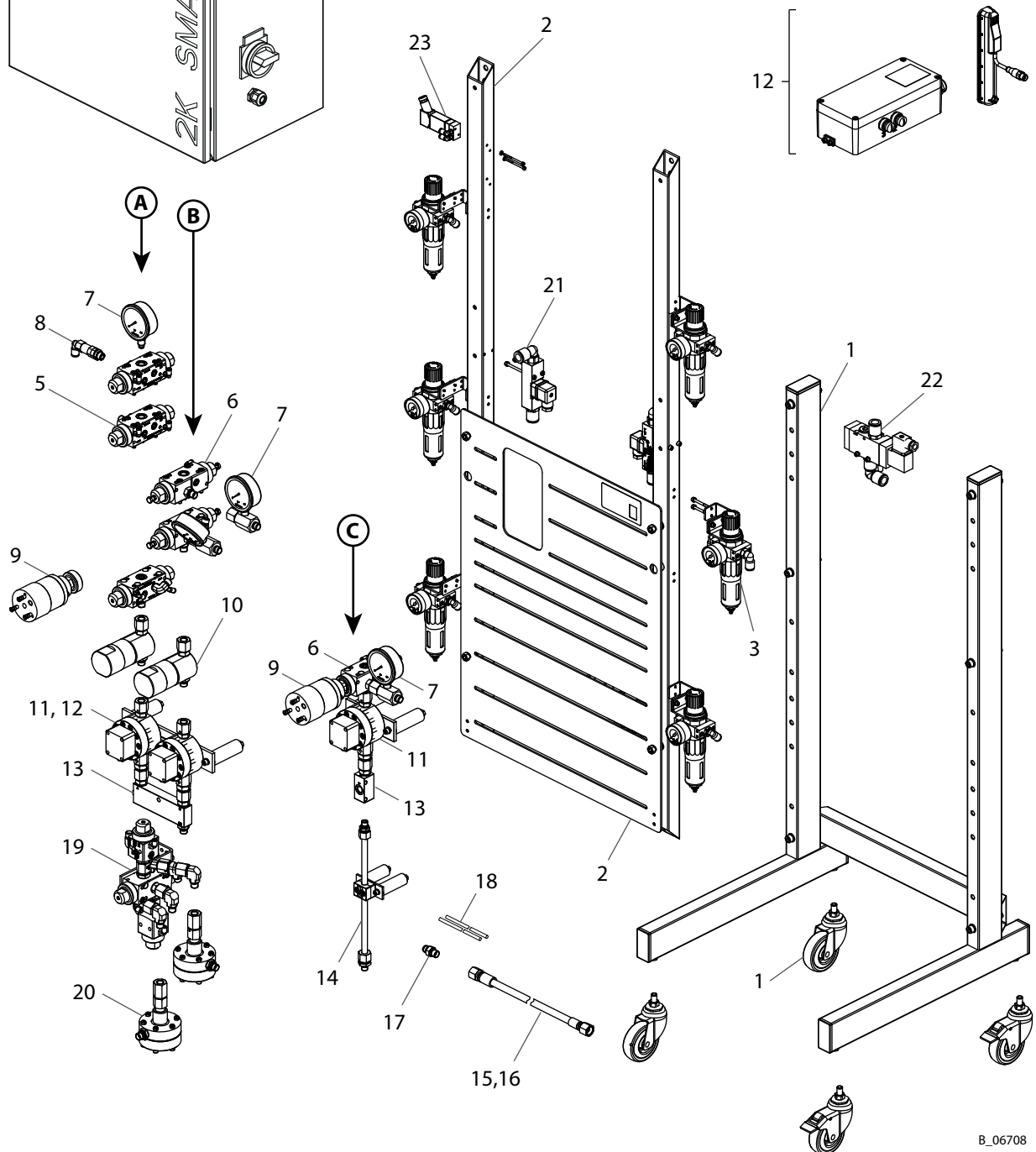
Overview of Spare Parts		Spare parts lists		
Pos	Description	in chapter	in assembly manual *	Name of the expansion or accessory set
1	Frame / stands / rollers	4		
2	Base module, mounting bracket, base plate	5		
3	Filter regulator	5.3		
4	Control cabinet	6	2383844	Output expansion (air supply connections)
5	Paint valves (component A)	7.1	2341827	Paint/flushing valve A, high pressure, DN 2.6/TC
				Paint/flushing valve A, high pressure, DN 2.6/SSt
				Paint/flushing valve A, low pressure, DN 4/SSt
6	Dosing valves (components B, C)	7.2	2343346	Dosing valve B, Ex
	Flushing agent distributor			7.3
7	Pressure gauge	7.4	2341829	Product pressure gauge, A component
			2341834	Product pressure gauge, B/C component
8	Air/solvent flushing		2343348	Air/solvent flushing
9	AIS (Adaptive Injection System)		2343352	AIS
10	Product filter	8	2343347	Inline filter
				Drip tray for filter change
11	Flow meters	Gear flow meters	9.1	
		Coriolis	9.2	
12	MPX-0403 A and B fluid spare parts			MPX-0403, fitting to 2K SMART
	ADC-0301 Stroke sensors, pressure switch Spare pump parts			see ADC-0301 / MPX-0403 operating manual (Order No., see Chapter 1.3.1)
	A/B/C conversion set stroke measuring			A/B/C flow meter to stroke measurement

* The assembly manuals are located on the supplied USB stick.

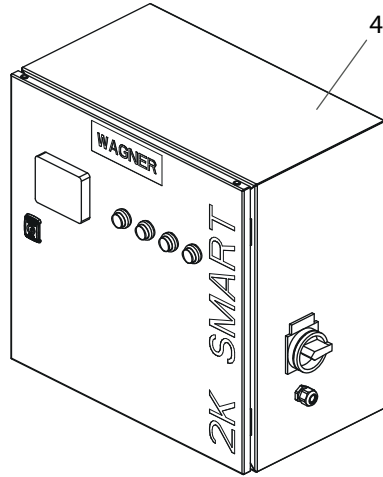
SPARE PARTS CATALOG



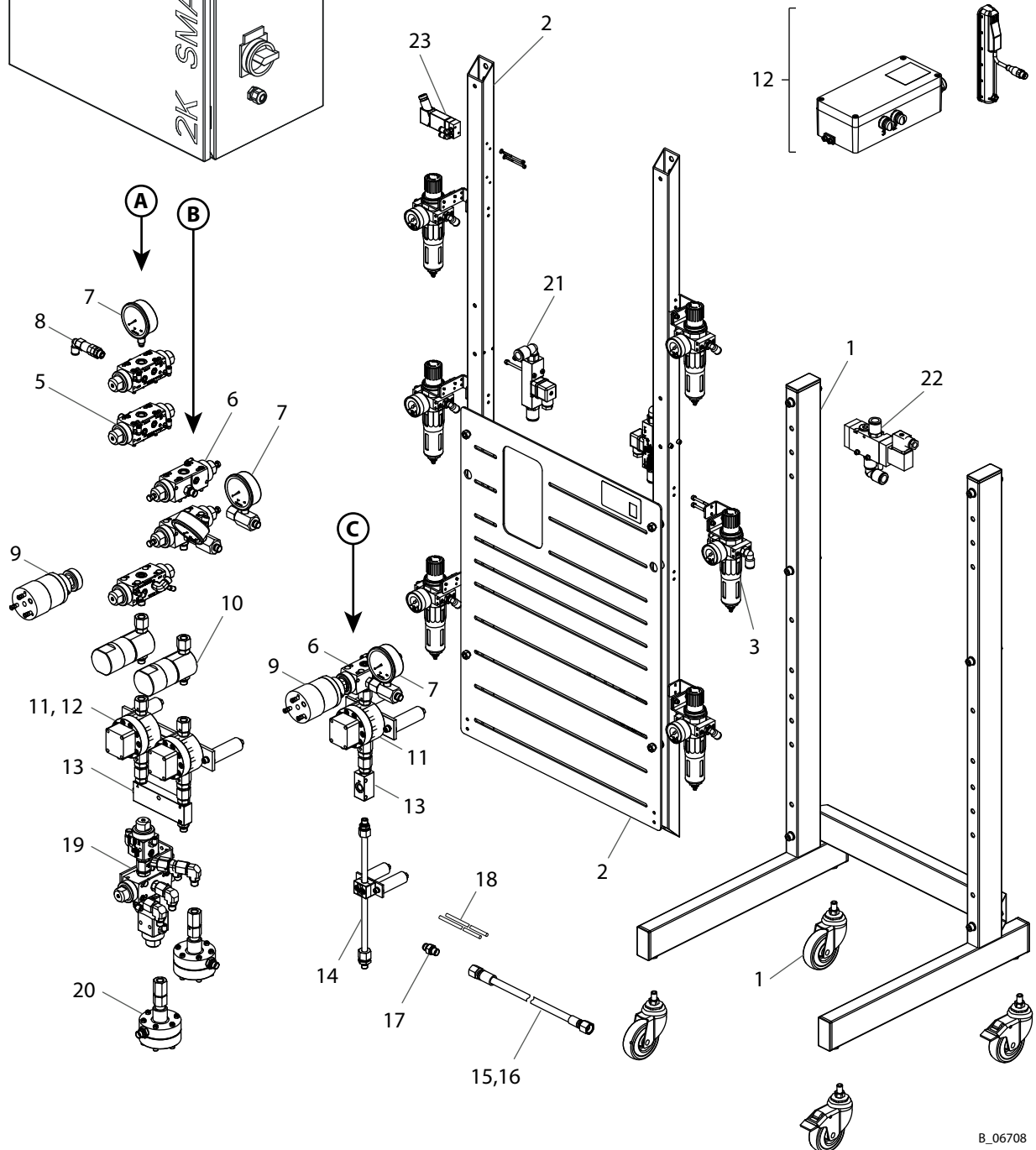
A = A component
B = B component
C = C component



SPARE PARTS CATALOG



A = A component
B = B component
C = C component

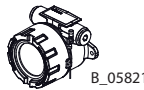
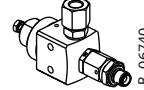
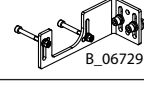
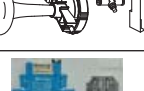
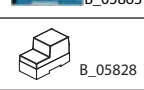

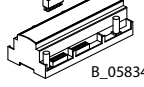




Overview of Spare Parts		Spare parts lists		
Pos	Description	in chapter	in assembly manual *	Name of the expansion or accessory set
13	Mixing block	10.1 10.3		
	Mix head valve	10.2	2343351	Mixing head cycle
	External mixer	10.2	2345311	External mixer, automatic
14	Mixing tubes	10.4	2343374	Mixing tube, 6-32E ST/KS
				Mixing tube, 5-32E ST/KS
				Mixing tube, 8-32E ST/KS
				Mixing tube, 10-32E ST/KS
15	Mixing hoses	11.1		
16	Product hoses, PA	11.2		
	Product hoses, FEP	11.3		
17	Fittings	11.4		
18	Air hoses and cable	12.2		
19	Splitter valve			High-pressure splitter valve (DN 2.6)
				Low-pressure splitter valve (DN 4)
				High-pressure splitter valve (DN 2.6) with flushing
	Low-pressure splitter valve (DN 4) with flushing			
	Splitter valve without valves	10.5		
20	Product pressure regulator			Product pressure regulator, 8 bar manual
				Product pressure regulator, digital (controllable)
21	Gun monitoring (air)			Gun monitoring, automatic gun
				Gun monitoring, AirSpray + AirCoat DN 8
	Gun monitoring (lacquer)			Flow monitor lacquer Airless, non-Ex
				Flow monitor lacquer Airless, Ex
22	Automatic atomizer air system			Automatic atomizer air system, DN8
23	Electro-pneumatic valves for explosive areas	12.1		

* The assembly manuals are located on the supplied USB stick.

	DANGER
	<p>Incorrect assembly/installation! Danger to life and equipment damage.</p> <ul style="list-style-type: none"> → Only a WAGNER service center or a suitably trained person may carry out assembly and installation of parts. → Only mount and replace parts that are listed in the scope of delivery or in the "Spare Parts" chapter and that are assigned to the device. → Before all work on the device and in the event of work interruptions: <ul style="list-style-type: none"> - Relieve pressure from spray guns and devices. - Secure spray guns against actuation. - Switch off the energy/compressed air supply. - Disconnect the control unit from the mains. → Observe the operating and service manual for all work.

Further Assembly Manuals with Spare Parts		
Assembly manual Order No. *	Name of the expansion or accessory set	
2341833	Control of gun flush box (GFB)	
	Air bubbles monitoring, non-Ex	
	Air bubbles monitoring, Ex	
	Automatic electrostatic system for GM 5000 spray gun	
	Automatic electrostatic system for GA 5000 spray gun	
2344539	Automatic dosing system	
2344754	External release, pneumatic	
	Electric external release → no spare parts	
	Dump valve	
	Dump valve, flushable	
2343371	Double dump valve for waste separation	
2343353	Circulation for 1 to 2 A components	
2343354	Circulation for B component	
	Fluid section cover	

	Control for booster pump → no spare parts	
2344542	Remote control Extension cable 15 m; 49 ft for remote control	
2344543	Calibration	
2343345	Mounting bracket	
2343372	Ex alarm horn	
	Robot communication	
	Profibus module	
See software documentation for 2K Archive (For Order No., see Chapter 1.3.1).	"2K Archive" PC data archiving	
2383844	Output expansion (air supply connections)	

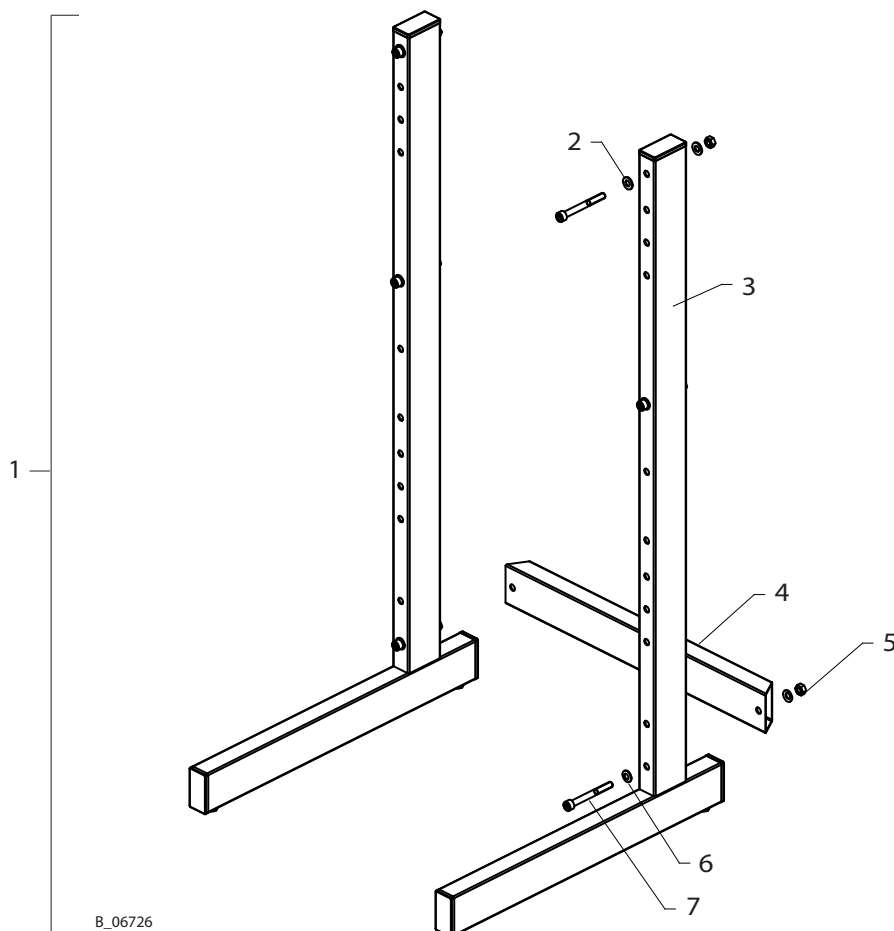
* The assembly manuals are located on the supplied USB stick.

Order No. of the Expansion and Accessory Sets

→ See operating manual (accessories chapter).

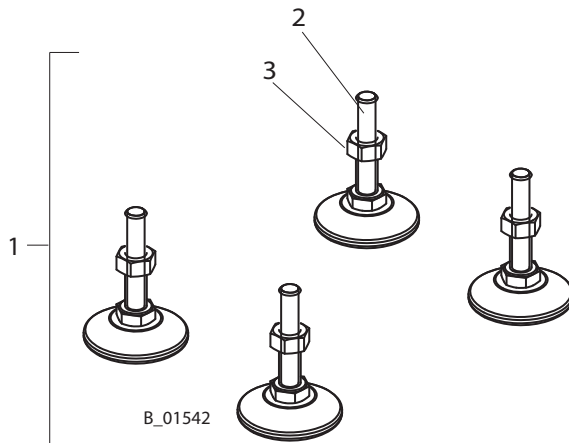
4 FRAME, STANDS AND ROLLERS

4.1 FRAME SET, 500



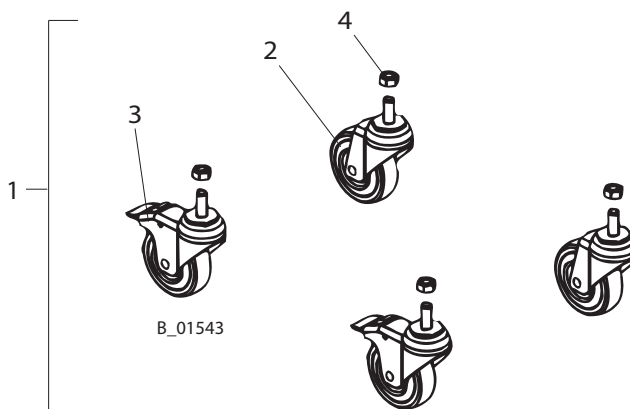
Pos	K	Stk	Order No.	Description
1		1	2384133	Frame set, 500
2		4	9920102	Washer
3		2	389349	Leg construction, complete
4		1	2372027	Connecting tube, 2K SMART
5		6	9910107	Hexagon nut
6		8	3155404	Contact washer, M8
7		6	9900324	Hexagon socket cylinder head screw

4.2 STANDS



Pos	K	Stk	Order No.	Designation
1		1	389095	Stand set
2		4	9998888	Stand
3		4	9910105	Hexagon nut

4.3 ROLLERS



Pos	K	Stk	Order No.	Designation
1	◆	1	377120	Roller set
2	◆	2	9994946	Castor, single
3	◆	2	9994947	Castor with double stop
4		4	9910105	Hexagon nut

◆ = Wearing parts

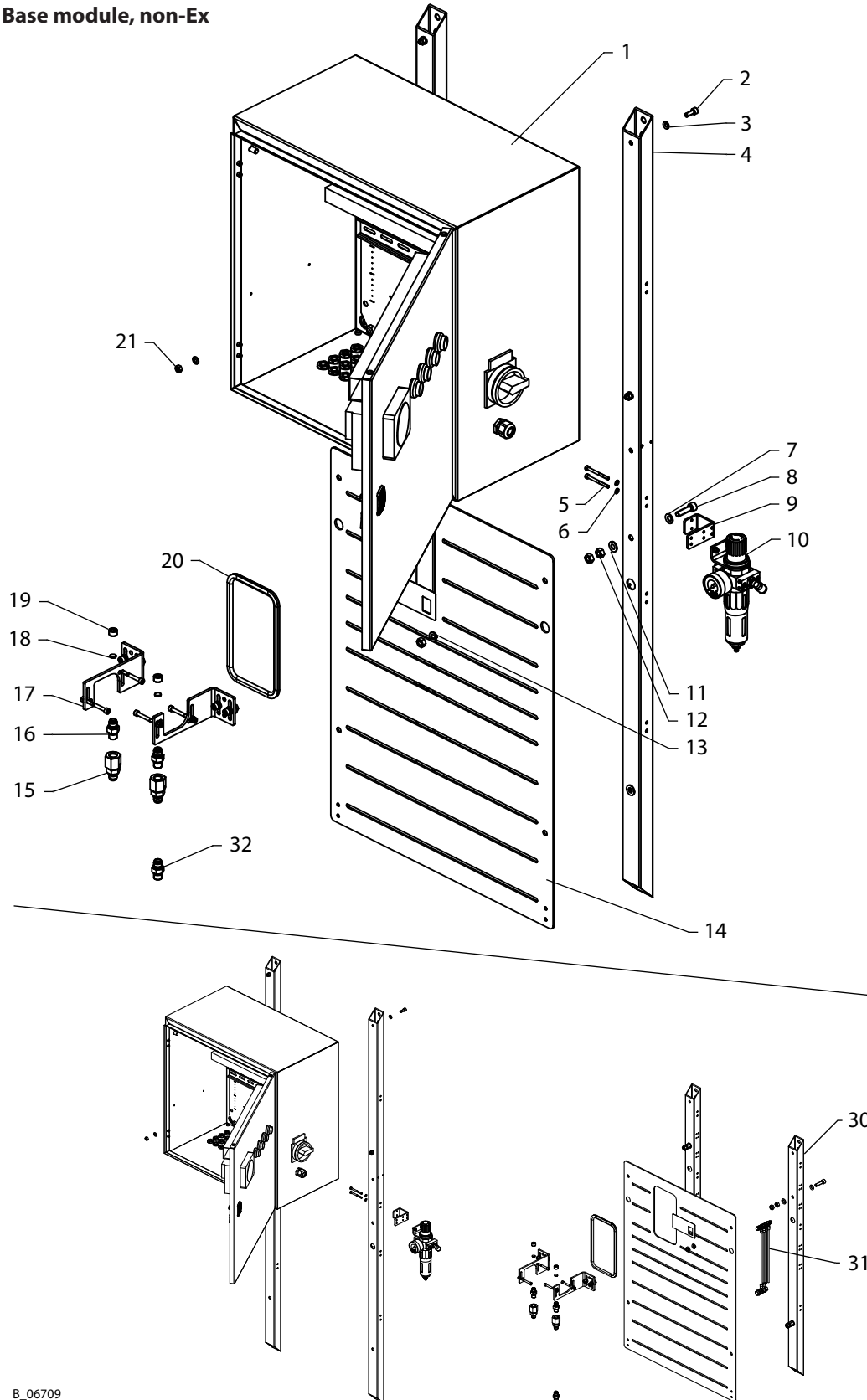
5 BASE MODULE

5.1 BASE MODULE, NON-EX

Spare parts list for base module, non-Ex				Control cabinet and fluid section	
Pos	K	Stk	Designation	one above the other	separately
				Order No.	Order No.
1		1	Control cabinet, 2K Smart For details, see Chapter 6	--	
2		4	Hexagon socket cylinder head screw	9900325	
3		8	Contact washer	3155401	
4		2	Wall mount	2372964	
5		2	Hexagon socket cylinder head screw	9900375	
6		2	Contact washer	3304634	
7		4	Contact washer, M8	3155404	
8		4	Hexagon socket cylinder head screw	9907079	
9		1	Retaining clamp	2332733	
10		1	Filter regulator set For details, see Chapter 5.3	--	
11		4	Washer	9920102	
12		12	Hexagon nut	9910107	
13		4	Spring washer	9921501	
14		1	Base plate, 500	2372019	
15		2	Fitting, SF-FM-G1/4-G1/4-530 bar-SSt	2332021	
16		2	Fitting, DF-MM-G1/4-G1/4-530 bar-SSt	2331174	
17		2	Mounting bracket set For details, see assembly manual 2343345	2343862	
18		2	Plug	384323	
19		2	Screw plug	104376	
20		1	Edge protector	9998066	
21		4	Hexagon nut	9910102	
30		2	Wall mount		2338522
31		1	Grounding set		--
32		1	Fitting, DF-MM-G1/4-1/4NPSM-530 bar-SSt	2330774	
--		2 m	Grounding cable green/yellow	9951211	
--		2	Cable lug	9950604	
--		1	Hexagon screw without shaft	9900145	
--		3	Washer	9920103	
--		2	Spring washer	9921502	
--		2	Hexagon nut	9910102	
--		1	USB stick, 2K SMART Specify the serial number of system	2373794	

◆ = Wearing parts

Base module, non-Ex



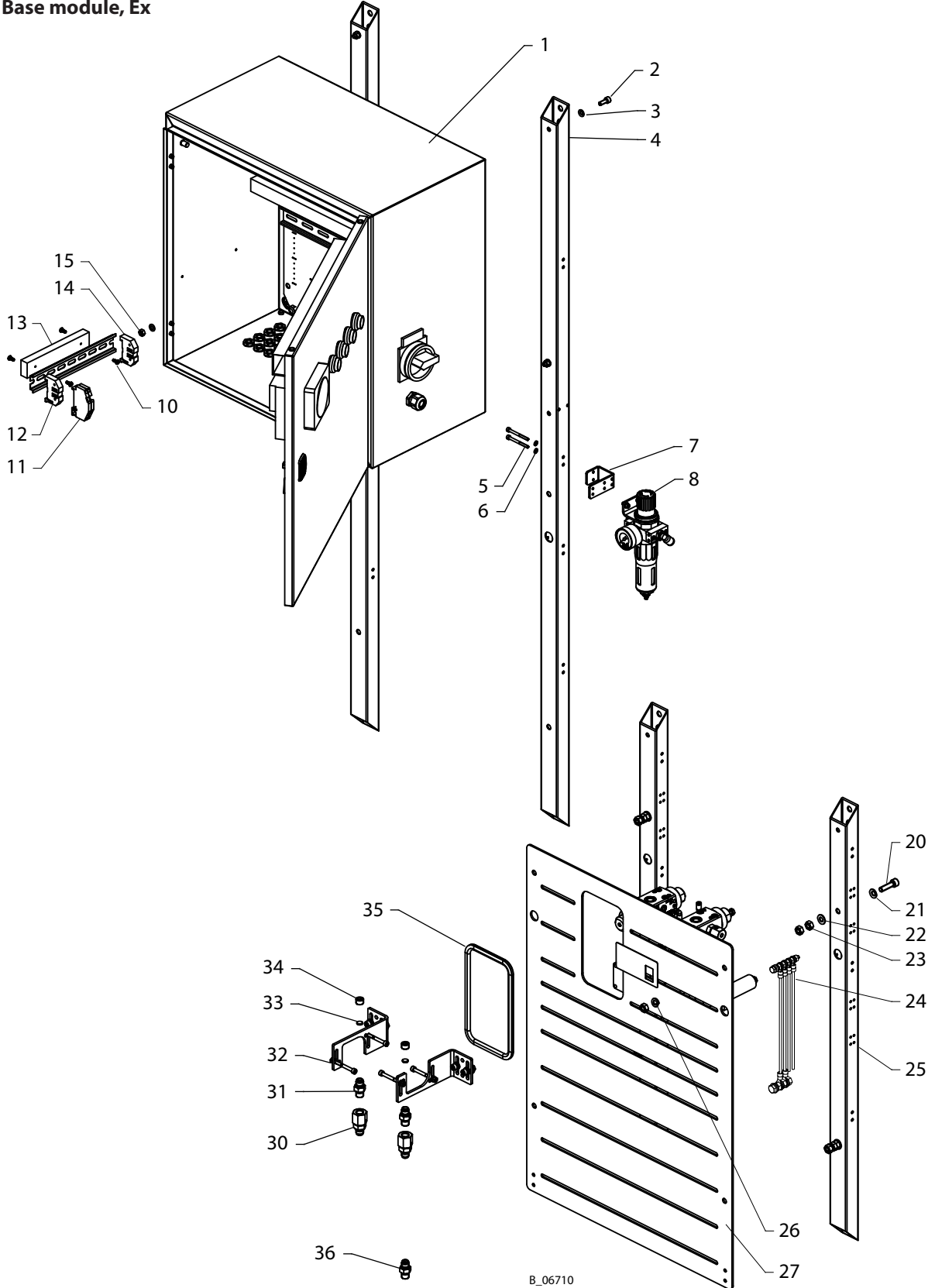
5.2 BASE MODULE, EX

Spare parts list for base module, Ex

Pos	K	Stk	Order No.	Designation
1		1	--	Control cabinet, 2K Smart For details, see Chapter 6
2		4	9900325	Hexagon socket cylinder head screw
3		8	3155401	Contact washer
4		2	2372964	Wall mount
5		2	9900375	Hexagon socket cylinder head screw
6		2	3304634	Contact washer
7		1	2332733	Retaining clamp
8		1	--	Filter regulator set For details, see Chapter 5.3
10		4	9902225	Recessed head fillister head self-tapping screw F, H form
11		2	3111035	Ground lead terminal 4
12		1	--	T-rail
13		1	--	Insulating plate
14		2	9955327	Bracket
15		4	9910102	Hexagon nut
20		4	9907079	Hexagon socket cylinder head screw
21		4	3155404	Contact washer, M8
22		4	9920102	Washer
23		12	9910107	Hexagon nut
24		1	--	Grounding set
25		2	2338522	Wall mount
26		4	9921501	Spring washer
27		1	2372019	Base plate, 500
30		2	2332021	Fitting, SF-FM-G1/4-G1/4-530 bar-SSt
31		2	2331174	Fitting, DF-MM-G1/4-G1/4-530 bar-SSt
32		2	2343862	Mounting bracket set For details, see assembly manual 2343345
33		2	384323	Plug
34		2	104376	Screw plug
35		1	9998066	Edge protector
36		1	2330774	Fitting, DF-MM-G1/4-1/4NPSM-530 bar-SSt
--		1	2373794	USB stick, 2K SMART Specify the serial number of system

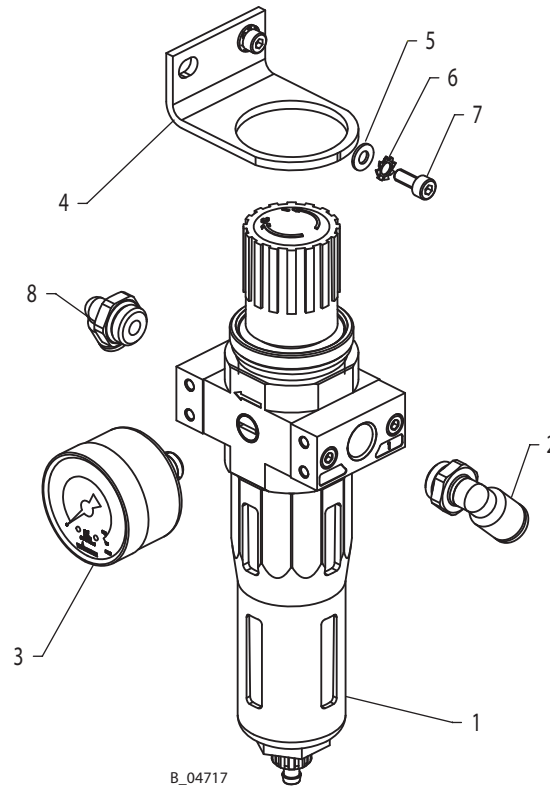
◆ = Wearing parts

Base module, Ex



B_06710

5.3 FILTER REGULATOR



Spare parts list for filter regulator

Pos	K	Stk	Order No.	Designation
1	◆	1	2331950	Filter control valve
2		1	9998253	Male stud elbow, 8-1/4
3	◆	1	9998677	Pressure gauge, 0-10 bar RF40 (d40)
4		1	2331938	Mounting bracket
5		2	9920104	Washer, A4.3
6		2	9922101	Serrated washer, externally toothed
7		2	3067610	Zinc-plated socket cap screw, hexagon socket
8		1	9998250	Threaded elbow fitting

◆ = Wearing parts

6 CONTROL CABINET

Allocation of the terminal output



→ **2K SMART Connection Table**

The "2K SMART connection table" is delivered together with the system and must be adapted for each conversion. It is available on the USB stick (see Chapter 1.4).

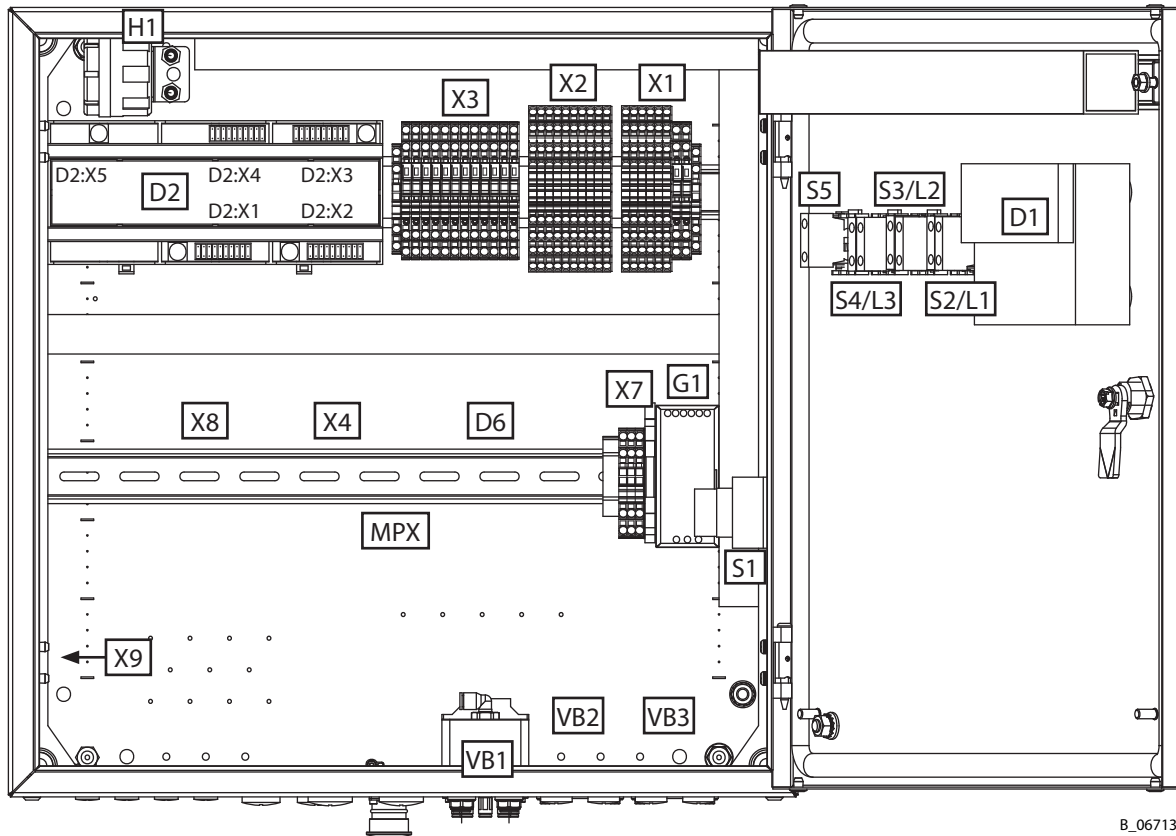
→ **Circuit diagram**

A system specific circuit diagram can be found on the USB stick (For Order No., see Chapter 1.4).

A general circuit diagram is available under order no. 2373459.

	 WARNING
	<p>Electric shock hazard inside the control unit! Danger to life from electric shock.</p> <p>→ May only be installed/maintained by skilled electricians or under their supervision. → Operation according to the safety regulations, fire protection and electrotechnical rules. → Must be de-energized before work is commenced on active parts.</p>

6.1 OVERVIEW OF CONTROL CABINET



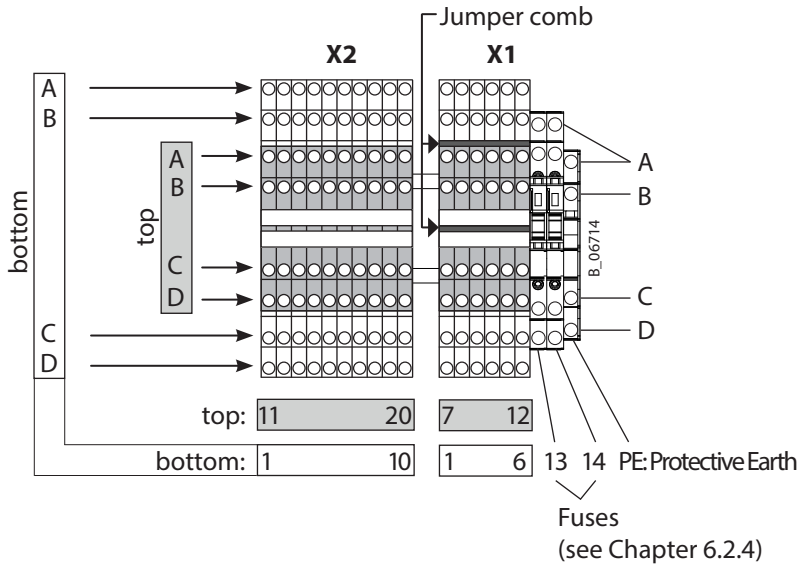
B_06713

Pos	Description
X1	Terminal block - Voltage supply, 24 VDC - Grounding terminals, GND - Protective earth, PE - Fuses (see Chapter 6.2.4)
X2	Terminal block digital inputs
X3	Terminal block digital outputs
X4	Robot communication (via relays)
X7	Terminal block inputs, grounding terminals
X8	Terminal block inputs, grounding terminals
X9	Zener barriers
MPX	Multiplexer (stroke measurement)
VB1 *	Matrix module 1, solenoid valves 1/1...1/8
VB2 *	Matrix module 2, solenoid valves 2/1...2/8
VB3 *	Matrix module 3, solenoid valves 3/1...3/8

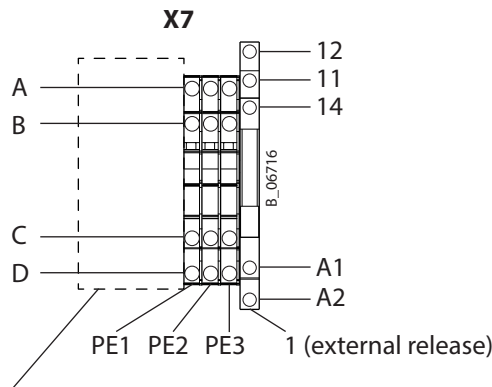
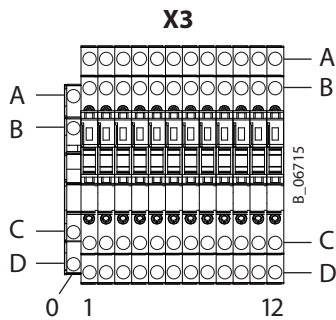
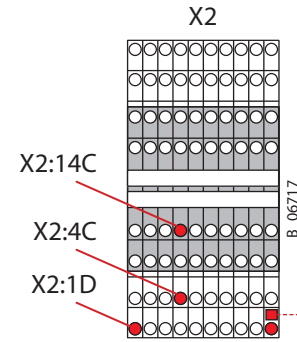
Pos	Description
D1	Touch panel
D2	Uni CAN I/O module (see Chapter 6.2.5)
D2:X1	Digital outputs
D2:X2	Digital outputs
D2:X3	Digital inputs
D2:X4	Analog inputs/outputs, counter
D2:X5	Voltage supply, D2
D6	Gateway / robot communication via bus
G1 *	Switching power supply
S1	Main switch (see Chapter 6.2.1)
S2/L1	Start / green (see Chapter 6.2.1)
S3/L2	Stop / red (see Chapter 6.2.1)
S4/L3	Flushing / blue (see Chapter 6.2.1)
S5	Recipe change (see Chapter 6.2.1)
H1	Alarm horn (see Chapter 6.2.3)

* see Chapter 6.2

6.1.1 ELECTRICAL CONNECTIONS



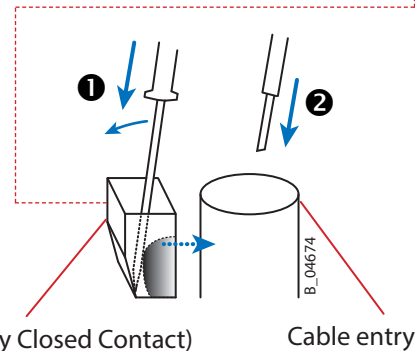
Examples



Further terminals depend on the installed expansions (see corresponding assembly manual)

Connect cable

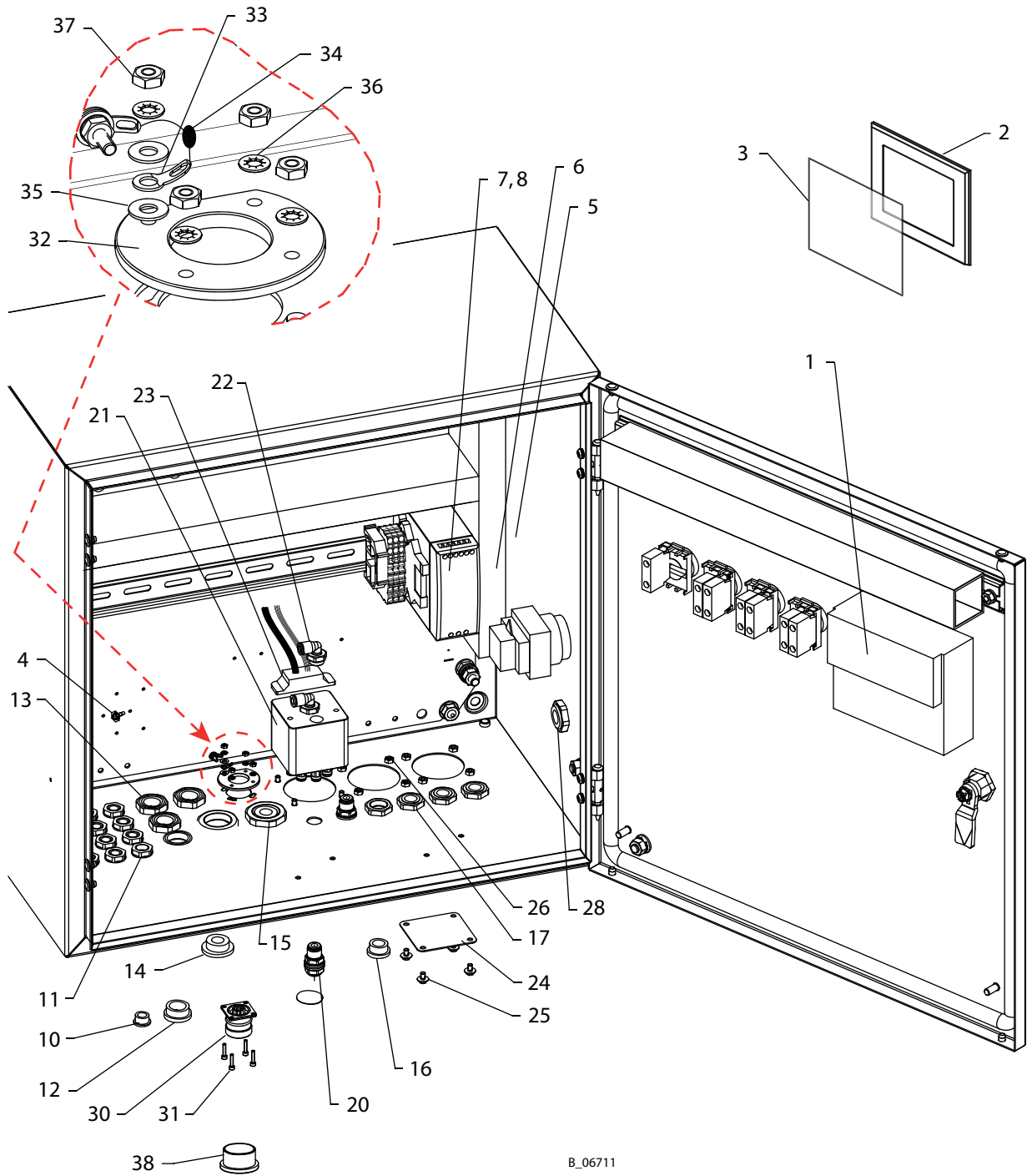
- 1 Press a 00 screwdriver up to stop in the NCC (with light lever movement away from the cable entry). The entry opens.
- 2 Insert the cable into the cable entry. Pull out the screw driver. The cable is clamped.



NCC (Normally Closed Contact)

Cable entry

6.2 CONTROL CABINET SPARE PARTS LIST



B_06711

SPARE PARTS CATALOG



Control cabinet spare parts list

Pos	K	Stk	Order No.	Designation
1		1	2383485 **	Controller, Proface LT-4000M (rear module) **
2	◆	1	2373015	Proface 5.7" display (touch panel)
			2373017	Proface 3.5" display (touch panel)
3	◆	1	9955953	Protective film for Proface 5.7" display
				Protective film for Proface 3.5" display
4		19-x *	9907220	Hexagon head drilling screw, K shape
5		1	2337671	Power supply
6		1-x *	9956161	Coupling relay
7		1-x *	9955327	Screwless end terminal
8		1-x *	3107597	Group plate carrier for labeling
10		16 *	3156861	Dummy plug, BLK-GL-M 12x1.5 Skindicht
11		16 *	3156831	Lock nut, M12x1.5
12		4 *	3156863	Dummy plug, BLK-GL-M 20x1.5 Skindicht
13		4 *	3156833	Lock nut, M20x1.5
14		2 *	3156864	Dummy plug, BLK-GL-M 25x1.5 Skindicht
15		2 *	3156834	Lock nut, M25x1.5
16		4 *	3156862	Dummy plug, BLK-GL-M 16x1.5 Skindicht
17		4 *	9955720	Lock nut, M16x1.5
20		2	9998614	Straight hermetic plug connection
21		1-3 *	2340944	Matrix module spare part, including pos. 22)
			2382518	Output expansion set (additional matrix module, including pos. 22 + 23)
22		2-6 *	9998250	Male stud elbow, 6-1/4 Ex
23		1-3 *	2337674	Cable for the 3/2-way valve, 8-fold
24		0-2 *	2337582	Cover plate
25		12	2338435	Hexagon screw with flange
26		0-8 *	9910108	Hexagon nut
28		1	9955721	Locknut
30		1	--	Socket
31		5	9900397	Hexagon socket cylinder head screw
32		1	--	Insulating plate
33		2	9952922	Solder lug 3.2
34		1	2342409	Capacitor, 1000pF, 1000V
35		5	9920114	Washer
36		5	9922020	Lock washer, toothed inside
37		5	9910122	Hexagon nut
38		1	2340069	Protective cap

◆ = Wearing parts

* Number depending on the installed expansions

** The controller works only with installed and suitable controller software! Please contact WAGNER for these spare parts and communicate the necessary software version and the serial number of the 2K system.

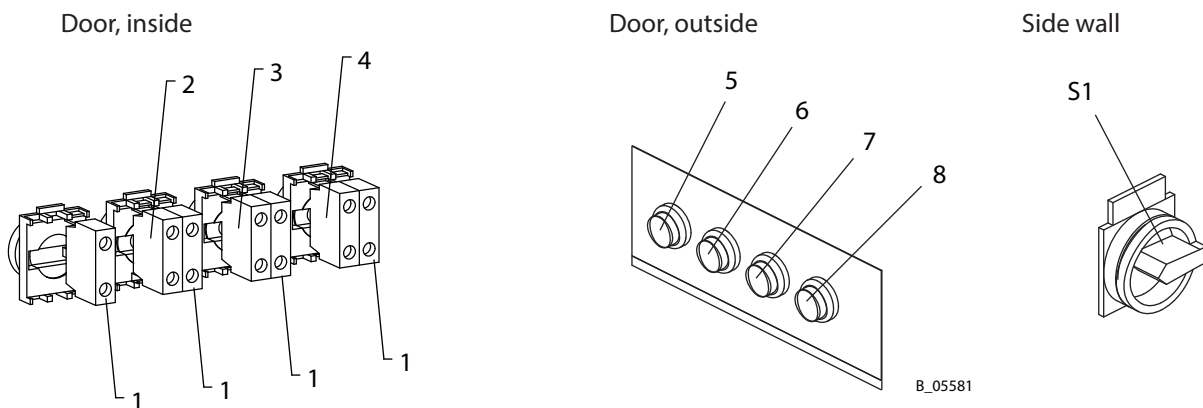
Further spare parts for the control cabinet

- see the following Chapters 6.2.1 to 6.2.5
- see the assembly manuals for the expansion and accessory sets

6.2.1 PUSH-BUTTONS AND MAIN SWITCH

Pos	K	Stk	Order No.	Designation
1		4	3155318	Contact element, 1 S
2		1	3155320	LED element, white
3		1	3155321	LED element, red
4		1	3155322	LED element, green
5	◆	1	9956027	Illuminated push button, green
6	◆	1	9956028	Illuminated push button, red
7	◆	1	2338262	Illuminated push button, blue
8	◆	1	2338264	Illuminated push button, yellow
S1	◆	1	9955955	Main switch red-yellow with emergency stop function
			9956014	Main switch black without emergency stop function

◆ = Wearing parts



6.2.2 ELECTRICAL CONNECTION CABLE FOR USA

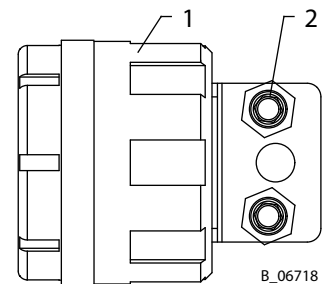
Pos	K	Stk	Order No.	Designation
1		1	392061	Electrical connection cable for USA

	WARNING
	<p>Electric shock hazard inside the control unit! Danger to life from electric shock.</p> <p>→ May only be installed/maintained by skilled electricians or under their supervision. → Operation according to the safety regulations, fire protection and electrotechnical rules. → Must be de-energized before work is commenced on active parts.</p>

6.2.3 ALARM HORN

Pos	K	Stk	Order No.	Designation
1		1	9956051	Alarm horn
2		2	9907220	Hexagon head drilling screw, K shape

◆ = Wearing parts

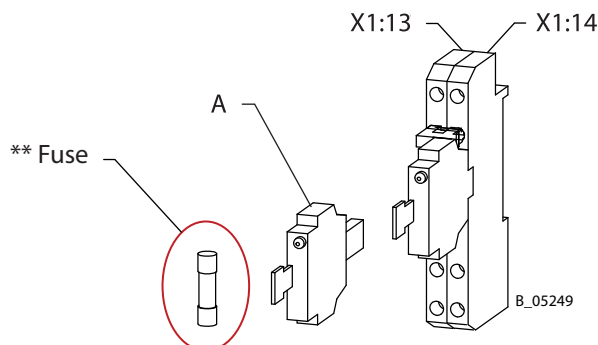


6.2.4 FUSES

Pos	K	Stk	Order No.	Designation
X1:13 – X1:14		2	9951116	2 ampere slow-acting fuse **
X3:1 – X3:10		10	2359953	Fast-acting fuse, 0.2 AF **
X3:11 – X3:12		2	2359958	Fast-acting fuse, 0.032 AF **
A		14	2361485	Fuse plug, 12-30 V

◆ = Wearing parts

Fuses CAN I/O module: see Chapter 6.2.5

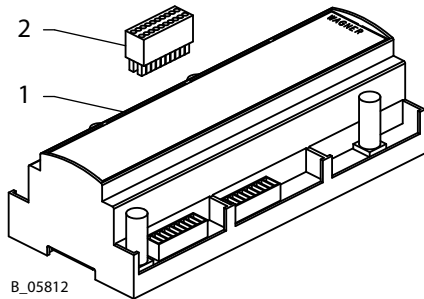


6.2.5 CAN I/O MODULE

Spare parts list for CAN I/O module (from serial number 100)

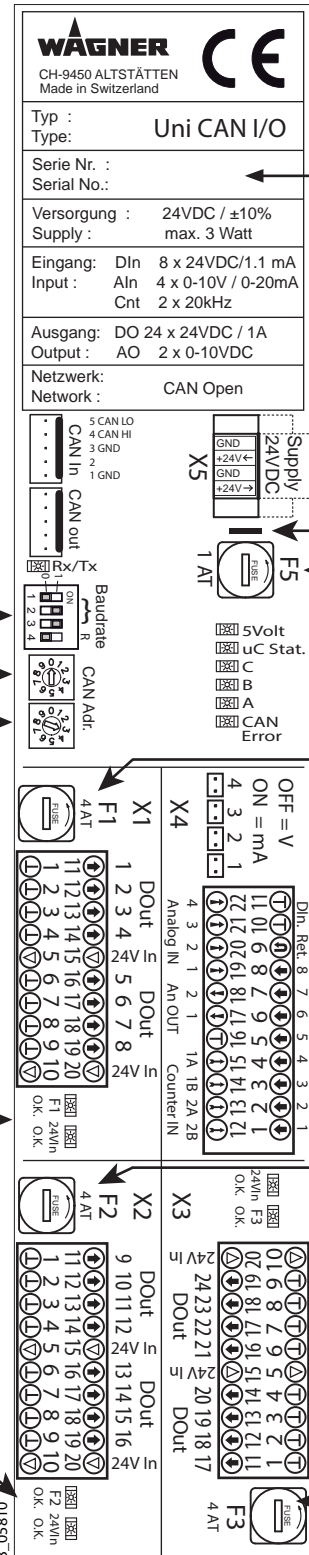
Pos	K	Stk	Order No.	Designation
1		1	2362132	Uni CAN I/O module
2		4	2355193	Plug connectors, circuit board 20pol DFMC
F1		3	2355496	Slow-acting fuse, 4.0 AT
F2				
F3				
F5		1	9951117	Slow-acting fuse, 1.0 AT

PE = Protective Earth



B_05812

Accept settings from the module to be replaced



Serial number (from 100)

PE
F5

F1

F2

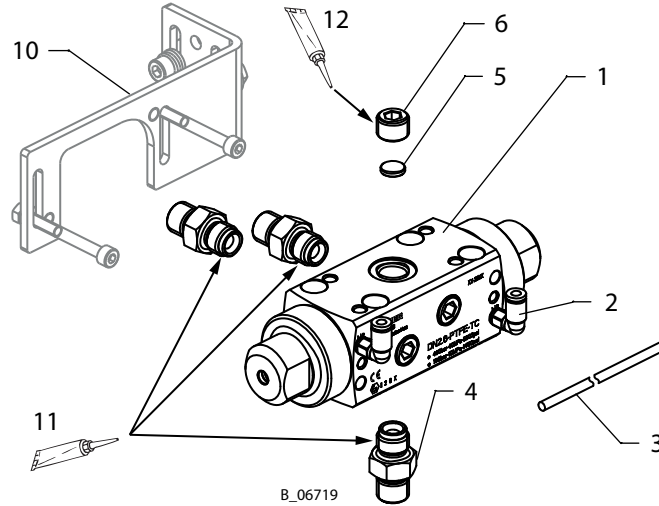
F3

LED for voltage supply

Fuse	Signals	Lamp	Voltage supply	
			before fuse	after fuse
F1	DOut 1-8	F1		X
		24VIn	X	
F2	DOut 9-16	F2		X
		24VIn	X	
F3	DOut 17-24	F3		X
		24VIn	X	
F5	Operating voltage	5 volts		X

7 PAINT AND DOSING VALVES

7.1 PAINT VALVES / FLUSHING VALVES FOR COMPONENT A



First double valve				High pressure, 400 bar	Low pressure, 100 bar	
Pos	K	Stk	Designation	DN 2.6 / TC	DN 2.6 / SSt	DN 4 / SSt
Order No.	Order No.	Order No.				
1		1	Paint valve (including item 2)	2342807 *	2342804 *	2306793 **
2		2	Male stud elbow	9992724		
3		1 m	Hose, black 4/2.5 PU	9982072		
4		3	Fitting, DF-MM-G1/4-G1/4-530 bar-SSt	2331174		
5		1	Plug	384323		
6		1	Screw plug	104376		
10		1	Mounting bracket set, for details, see assembly manual 2343345	2343862		
11		1	Molykote® DX grease	9992616		
12		1	Loctite® 542	9992831		

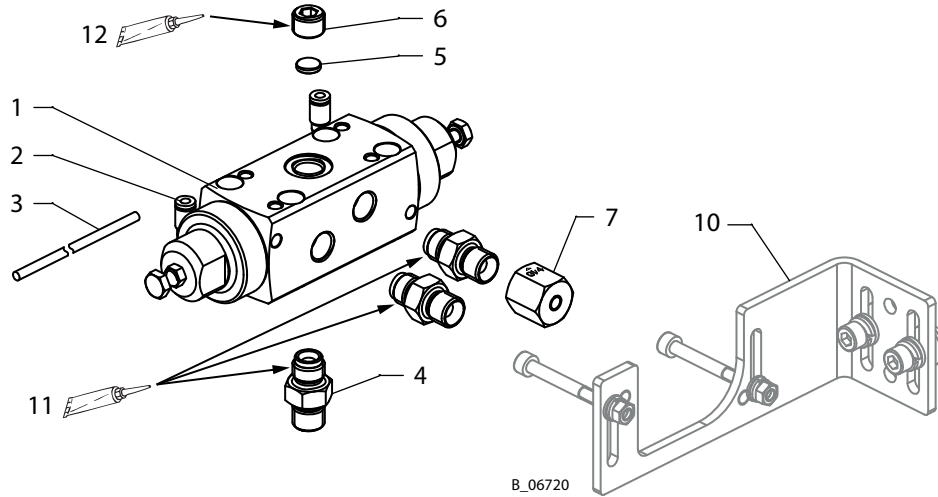
* For details, see the "paint valves and dosing valves PV, DV, GA (DN 2.6)" operating manual, for Order No., see Chapter 1.3.1.

** For details, see the "paint valves and dosing valves PV, DV, GA (DN 4)", operating manual, for Order No., see Chapter 1.3.1.

Additional double valves	Spare Parts
Paint/flushing valve A set, high pressure, DN 2.6 / TC	See assembly manual, Order No. 2341827
Paint/flushing valve A set, high pressure, DN 2.6 / SSt	
Paint/flushing valve A set, low pressure, DN 4	

Air flushing	Spare Parts
Air/solvent flushing (supplement for valve A)	See assembly manual, Order No. 2343348

7.2 DOSING VALVES / FLUSHING VALVES FOR COMPONENTS B AND C



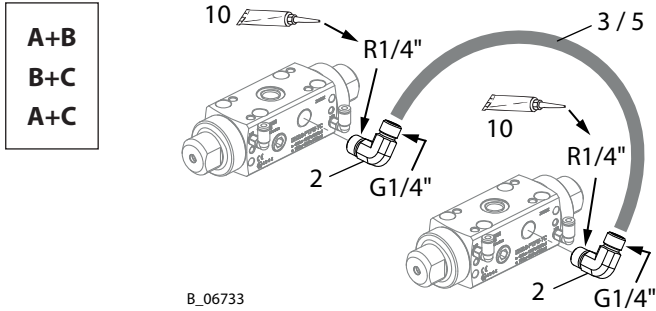
First double valve				TC	SSt	1.4404
				(Carbide valve seat)	(Stainless steel valve seat)	(1.4404 valve seat)
				B/C components	B/C components	B component
Pos	K	Stk	Designation	Order No.	Order No.	Order No.
1		1	Dosing valve (including item 2)	2342808 *	2342806 *	2370685 *
2		2	Male stud elbow	9992724		
3		1 m	Hose, black 4/2.5 PU	9982072		
4		3	Fitting, DF-MM-G1/4-G1/4-530 bar-SSt	2331174		
5		1	Plug	384323	2370230	
6		1	Screw plug	104376	104376	
7		0-1	Fitting, PF-F-G1/4-530 bar-SSt	2333659		
10		1	Mounting bracket set, for details, see assembly manual 2343345	2343862		
11		1	Molykote® DX grease	9992616		
12		1	Loctite® 542	9992831		

◆ = Wearing parts

* For details, see the "paint valves and dosing valves PV, DV, GA (DN 2.6)" operating manual, for Order No., see Chapter 1.3.1.

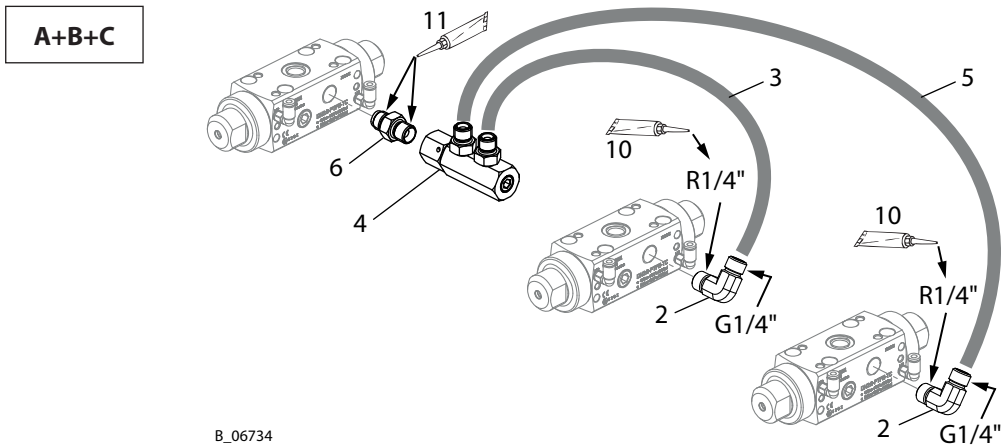
Additional double valves	Spare Parts
Dosing/flushing valve B, non-Ex Flushing valve B, Ex Dosing valve B, Ex (with mixing head cycle)	See assembly manual, Order No. 2343346
Valve B dosing, Ex (without mixing head cycle)	See assembly manual

7.3 FLUSHING AGENT DISTRIBUTOR



Same flushing agent for A+B / B+C / A+C / A+B+C				A+B B+C	A+C	A+B+C
Pos	K	Order No.	Designation	Stk	Stk	Stk
1		--	Distributor: 1 flushing agent for several components	1	1	1
2		2328186	Fitting, EF-MM-G1/4-R1/4-530bar-SSt	2	2	2
3	◆	2337560	HP hose, DN4-PN350-PA 0.345 m	1	/	1
4		2359038	Circulation connection G1/4", complete	/	/	1
5	◆	2339971	HP hose, DN4-PN350-PA 0.705 m	/	1	1
6		2331174	Fitting, DF-MM-G1/4-G1/4-530 bar-SSt	/	/	1
10		9992528	Loctite® 270	1	1	1
11		9992616	Molykote® DX grease	1	1	1

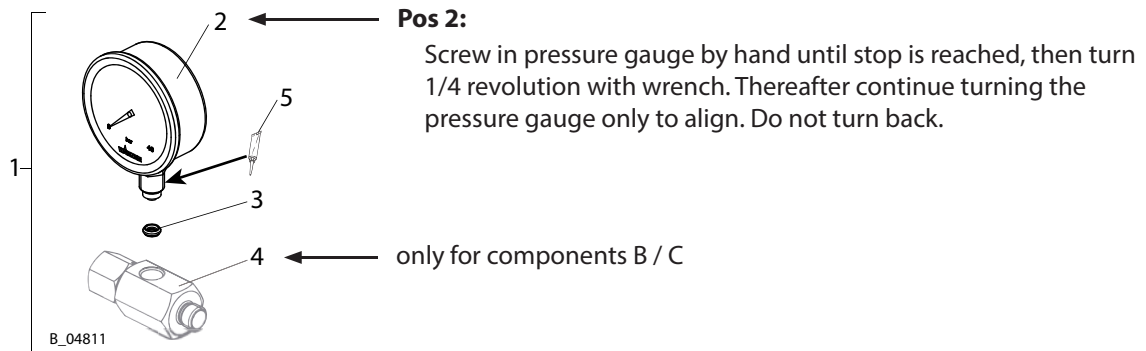
◆ = Wearing parts



7.4 PRODUCT PRESSURE GAUGE

Product pressure gauge A				0-40 bar	0-250 bar	0-400 bar
Pos	K	Stk	Designation	Order No.	Order No.	Order No.
1		1	Pressure gauge for assembly; set	2339428	2339429	2382516
2	◆	1	Pressure gauge	2334656	2334652	3676863
3	◆	1	Pressure gauge seal 1/4"	9970153		
5		1	Molykote® DX grease	9992616		

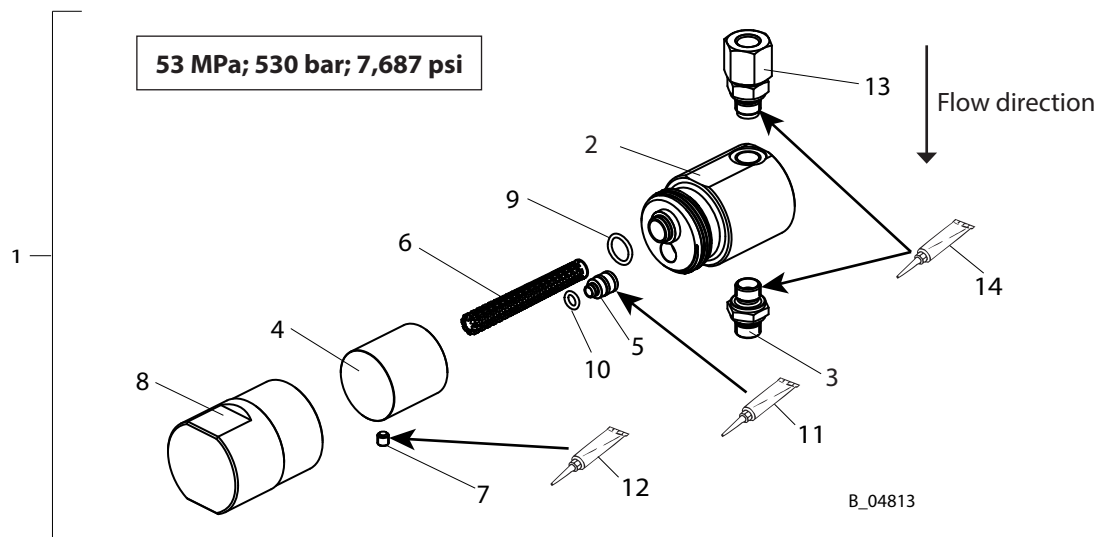
◆ = Wearing parts



Product pressure gauges B / C				0-40 bar	0-250 bar	0-400 bar
Pos	K	Stk	Designation	Order No.	Order No.	Order No.
1		1	Pressure gauge for assembly; set	2340966	2340965	2382517
2	◆	1	Pressure gauge	2334656	2334652	3676863
3	◆	1	Pressure gauge seal, 1/4"	9970153		
4		1	Distributor piece, complete	2340935		
5		1	Molykote® DX grease	9992616		

◆ = Wearing parts

8 PRODUCT FILTER



B_04813

Pos	K	Stk	Order No.	Designation
1		1	2339994	Inline filter set
2		1	--	Filter body
3		1	3204611	Fitting, DF-MM-G1/4-G1/4-530 bar-SSt
4		1	--	Filter attachment
5		1	--	Sealing bolt
6	◆	1	--	Filter insert, yellow (middle), 100 mesh per inch *
	◆●	1	2315723	* Filter insert, red (fine), 200 mesh per inch – 10 pieces
	◆●	1	2315724	* Filter insert, blue (middle), 150 mesh per inch – 10 pieces
	◆●	1	2315725	* Filter insert, yellow (middle), 100 mesh per inch – 10 pieces
	◆●	1	2315726	* Filter insert, white (coarse), 50 mesh per inch – 10 pieces
	◆●	1	2365429	* Filter insert, green (coarse), 30 mesh per inch – 10 pieces
7		1	9907068	Threaded pin with hexagon socket / flat point
8		1	--	Union nut
9	◆	1	2339614	O-ring
10	◆	1	2339615	O-ring
11		1	9992528	Loctite® 270
12		1	9992831	Loctite® 542
13		1	2332021	Fitting, FWV-FM-G1/4-G1/4-PN530-SSt
14		1	9992616	Molykote® DX grease

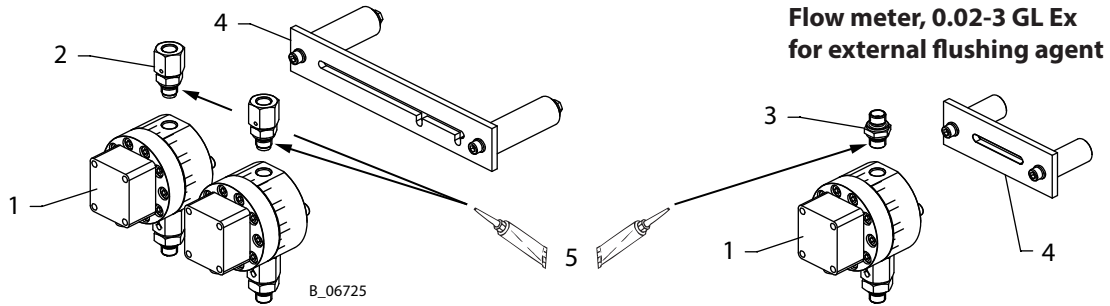
◆ = Wearing parts

● = Not part of the standard equipment but available as a special accessory.

Drip tray for filter change and assembly: see assembly manual 2343347

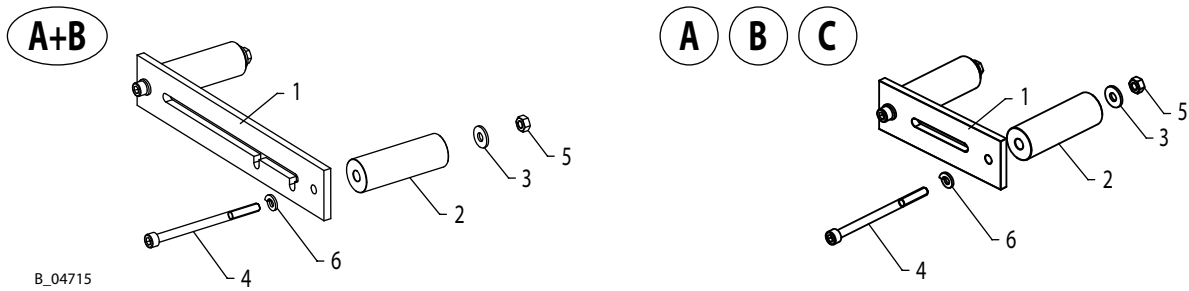
9 FLOW METERS

9.1 GEAR FLOW METERS



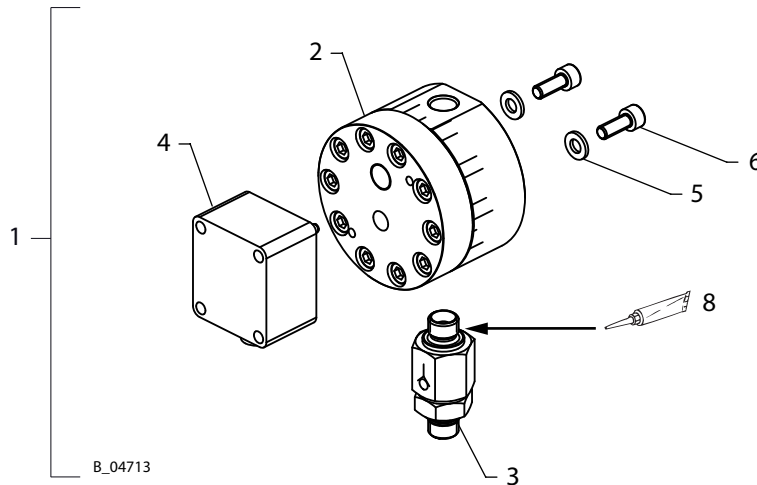
Pos	K	Stk	Designation	for A, B, C	for external flushing agent
				Order No.	Order No.
1		1-4	Gear flow meter (For details see Chapters 9.1.2 - 9.1.4)	--	--
2		1-3	Fitting, FWV-FM-G1/4-G1/4-PN530-SSt	2332021	
3		1	Fitting, DF-MM-G1/4-G1/4-530 bar-SSt		3204611
4		1-3	Flow meter mount (For details see Chapter 9.1.1)	--	--
5		1	Molykote® DX grease	9992616	

9.1.1 FLOW METER MOUNT



Pos	K	Stk	Designation	Mounting for 2 flow meters (A+B)	Mounting for 1 flow meter (A/B/C)	Mounting for 1 flow meter (external flushing agent)
				Order No.	Order No.	Order No.
1		1	Flow meter bracket	2337345	2337455	
2		2	Distance bush	2337346		2355808
3		2	Washer, A6.4, DIN 125	9925031		
4		2	Hexagon socket cylinder head screw	9907014		9906036
5		2	Hexagon nut	9910102		
6		2	Lock washer, A6.0	9921502		

9.1.2 GEAR FLOW METERS, 0.02-3 GL, 0.02-3 KL AND 0.005-2 GL

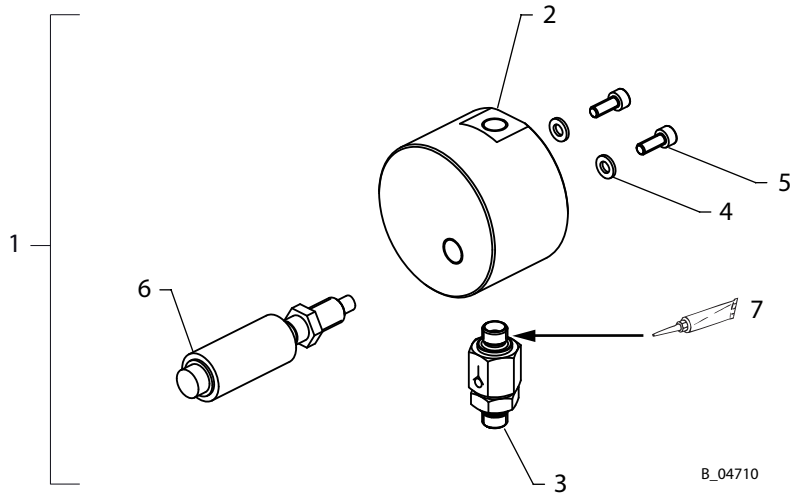


Pos	K	Stk	Designation	0.005-2 GL Ex	0.02-3 KL Ex	0.02-3 GL Ex	0.02-3 GL Ex 1.4404
				Order No.	Order No.	Order No.	Order No.
1		1	Gear flow meter set	2343336	2343337	2343338	2384372
2	◆	1	Gear flow meter	2343973	2343972	2343971	2371445
3	◆	1	Non-return valve, DN6-PN270-G1/4"-SSt	2329021			2370695
4		1	Pickup, 2/3 Ex	2302977			
5		2	Washer, A6.4, DIN 125	9920103			
6		2	Hexagon socket cylinder head screw	9906015			
8		1	Molykote® DX grease	9992616			

◆ = Wearing parts

Cable set
see Chapter 9.1.5

9.1.3 GEAR FLOW METERS, 0.005 - 0.5 KL AND 0.1-7 GL



B_04710

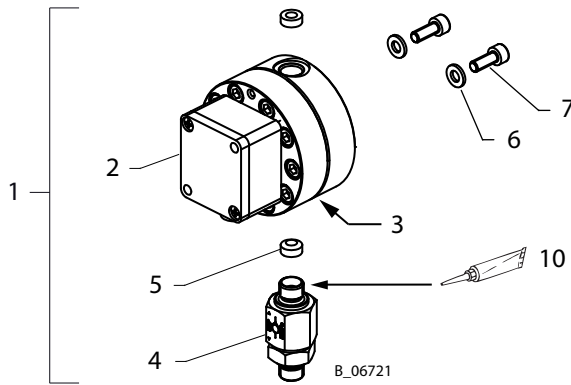
Pos	K	Stk	Designation	0.005-0.5 KL Ex	0.1-7 GL Ex
				Order No.	Order No.
1		1	Gear flow meter set	2343334	2343335
2	◆	1	Gear flow meter	2343974	2311948
3	◆	1	Non-return valve, DN6-PN270-G1/4"-SSt	2329021	
4		2	Washer, A6.4, DIN 125	9920103	
5		2	Hexagon socket cylinder head screw	9906015	
6		1	Carrier frequency pulse amplifier	9956281	9955932
7		1	Molykote® DX grease	9992616	

◆ = Wearing parts

Cable set

see Chapter 9.1.5

9.1.4 GEAR FLOW METER, 0.005-1 GL DUAL PICKUP



Pos	K	Stk	Designation	0.005-1 GL Ex Dual Pickup
				Order No.
1		1	Gear flow meter set	2374238
2	◆	1	Gear flow meter including carrier frequency pulse amplifier	9955686
3	◆	1	O-ring	on request
4	◆	1	Non-return valve, DN6-PN270-G1/4"-SSt	2329021
5		2	Sleeve	9998867
6		2	Washer	9920103
7		2	Hexagon socket cylinder head screw	9906015
10		1	Molykote® DX grease	9992616

◆ = Wearing parts

Cable set

see Chapter 9.1.5



9.1.5 CABLE SET FOR GEAR FLOW METER

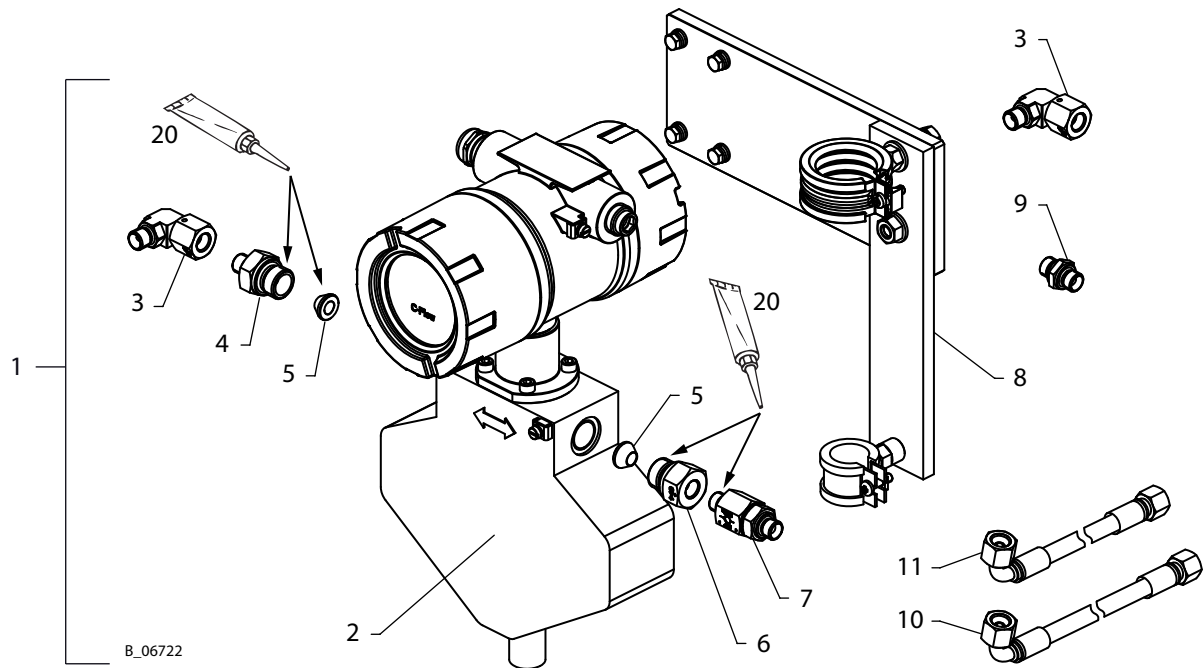
Cable set for gear flow meter			Non-Ex				Ex					
			Fluid cabinet/control cabinet separately				Dual Pickup					
			one above the other		Dual Pickup		no	yes	no	yes		
Pos K	Stk	Designation	Order No.	Order No.	Order No.	Order No.	Order No.	Order No.				
1	1	Low frequency line, 2 m; 78 inches	384401									
2	1.6 m	Cable for flow meter (per meter)	9955901									
	m			9955900	9955901	9955900	9955901					
3	1	Cable screw connection, ST M12-1.5		3156823								
4	1	Grounding terminal		9955804								
5	1	Hexagon drilling screw		9907220								
6	0.02 m	Shrink tubing	9987096	9982163	9987096	9987096	9987096	9987096				
7	1	Staggered jumper, 2-fold	2358591				2358591					
	2	Jumper bar, 2-fold	9956083	9956083	9956083	9956083	9956083	9956083				
	1											
8	1	Angled plug socket (flow meter plug) *		9955933								
9	6.50 m	Strand, dark blue 0.75 mm ² (8 m for Dual Pickup)	3110388	9951705	9951705	9951705	3110388	9951705				
10	2	Double-deck terminal block, 2-lead L/L	2372810	9955960	9955960	9955960	2372810	9955960				
	2											
	1											
11	1	End plate	2372811	9955961	9955961	9955961	2372811	9955961				
	6	End-sleeve with insulation					9951319	9951319				
10												
13	1	Zener barriers, Z787.H					9956095	9956095				
14	1	Zener barriers, Z787						9955954				
15	1	Zener barriers, Z728						3156559				

* Plug assembly on the flow meter cable: see assembly manual "Dosing valve B/C, Ex".

Cable set for flow meter in external flushing agent: **Non-Ex:** Non-Ex column, separate fluid cabinet/control cabinet, not Dual Pickup
Ex: Ex column, not Dual Pickup

9.2 CORIOLIS FLOW METERS

9.2.1 CORIOLIS FLOW METER, 0.075-5

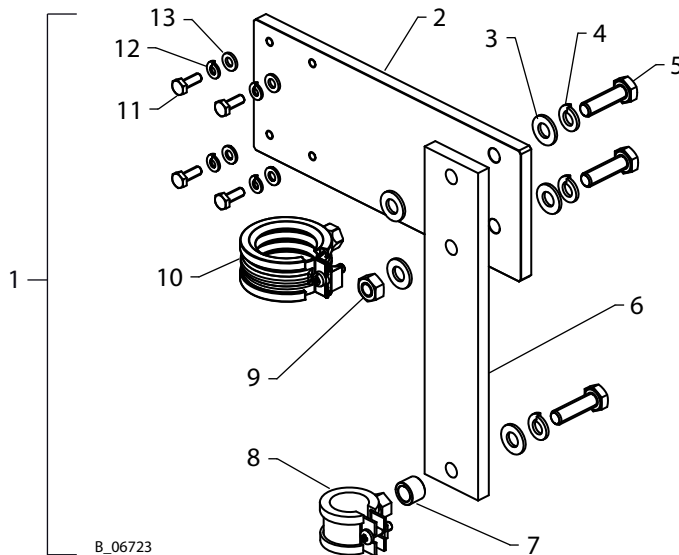


Spare parts list for Coriolis compact, 0.075-5 Ex

Pos	K	Stk	Designation	Order No.
1		1	Coriolis compact set, 0.075-5 Ex	--
2	◆	1	Coriolis compact, NW4 Ex (without mounting bracket)	2359845
3		2	Fitting, EF-FM-G1/4-G1/4-530 bar-SSt	2331273
4		1	Fitting, DF-MM-G1/2-G1/4-530 bar-SSt	2331062
5	◆	2	Filler part, 1/2 x 9	2355339
6		1	Fitting, RF-FM-G1/4-G1/2-530 bar-SSt	2355349
7	◆	1	Non-return valve, DN6-PN270-G1/4"-SSt	2329021
8		1	Mounting bracket Coriolis-Compact 2, complete For details, see Chapter 9.2.2	--
9		1	Fitting, DF-MM-G1/4-G1/4-530 bar-SSt	3204611
10	◆	1	HP hose, DN6-PN325 FEP W-G 0.67 m	2333791
11	◆	1	HP hose, DN6-PN325 FEP W-G 0.52 m	2333779
20		1	Molykote® DX grease	9992616

◆ = Wearing parts

9.2.2 MOUNTING BRACKET CORIOLIS-COMPACT 2



Spare parts list for Coriolis compact 2 mounting bracket

Pos	K	Stk	Order No.	Designation
1		1	--	Mounting bracket Coriolis-Compact 2, complete
2		1	2364032	Holding plate
3		5	9920106	Washer
4		3	9921507	Spring washer
5		3	9900127	Hexagon screw without shaft
6		1	2359975	Mounting plate
7		1	392345	Spacing tube
8		1	2301034	Hose clip with rubber, M8/10
9		1	9910105	Hexagon nut
10		1	9999588	Screw pipe clip
11		4	9900111	Hexagon screw without shaft
12		4	9921502	Spring washer
13		4	9920103	Washer

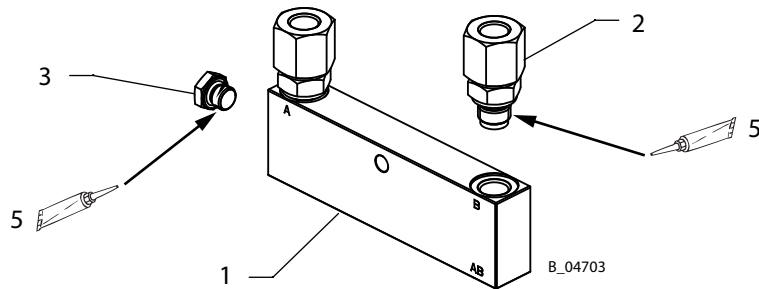
◆ = Wearing parts

9.2.3 CABLE SET FOR CORIOLIS

Cable set for Coriolis			Non-Ex		Ex
			Fluid cabinet/ control cabinet		
Pos K	Stk	Designation	Order No.	Order No.	Order No.
1	4 m	Control cable, 8Gx1	2362458		
	m				2362458
2	1	Cable connection		3156825	
3	1	Grounding terminal, FGC-8		2358998	
4	1	Hexagon drilling screw		9907220	
5	1	Locknut		9955721	
6	0.02 m	Shrink tubing		9987096	
	2	Staggered jumper, 2-fold	2358591		2358591
7	2	Jumper bar, 2-fold		9956083	
8	1	Cable lug, round with isolation		9950630	
9	3 m	Strand, 0,75 mm ² , dark blue	3110388	9951705	3110388
	1	Double-deck terminal block, L/L, 2-lead terminal	2372810		2372810
10	2	Double-deck terminal block, 3-lead		9955960	
11	1	End plate	2372811	9955961	2372811
12	1	End plate	2372815	9956034	2372815
	1	Triple deck terminal block, L/L/L, 2-lead clamp	2372814		2372814
13	1	Triple deck terminal block		9956038	
15	0.8 m	Grounding cable, green/yellow 1.5 mm ²		9953412	

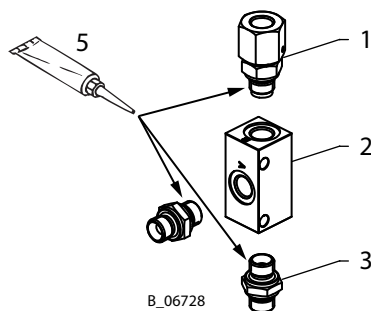
10 MIXER

10.1 MIXING BLOCK



Spare parts list for components A+B mixing block

Pos	K	Stk	Order No.	Designation
1		1	2337392	Mixing block
2		2	2332021	Fitting, SF-FM-G1/4-G1/4-530 bar-SSt
3		1	2304311	Plug, 1/8"
5		1	9992616	Molykote® DX grease



Spare parts list for component C mixing block

Pos	K	Stk	Order No.	Designation
1		1	2332021	Fitting, FWV-FM-G1/4-G1/4-PN530-SSt
2		1	384326	Mixing block
3		1	3204611	Fitting, DF-MM-G1/4-G1/4-530 bar-SSt
5		1	9992616	Molykote® DX grease

10.2 MIXING HEAD VALVE OR EXTERNAL MIXER



The T piece is located on the flushing agent input on the A side.

Pos	K	Stk	Order No.	Designation
1		1	2339573	T-piece, G1/4"

Mix head valve

For further spare parts: see assembly manual for "mixing head valve set" – Order No. 2343351.

External Mixers

For further spare parts: see assembly manual for "external mixer, automatic" – Order No. 2345311.

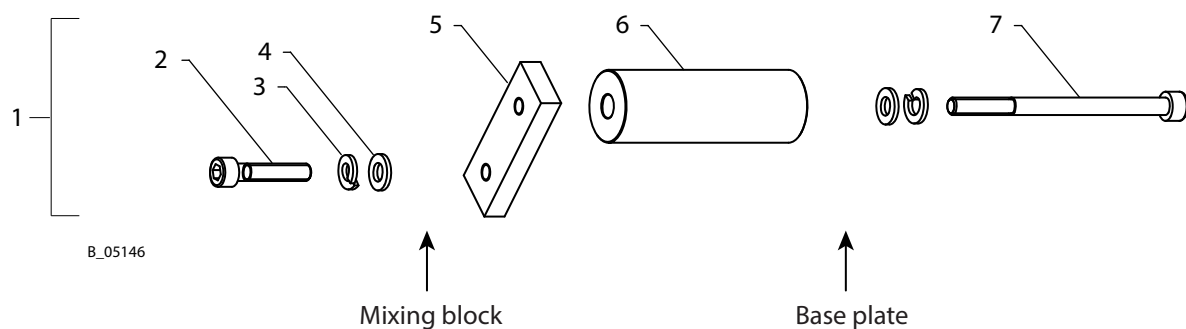
10.3 STROKE MEASUREMENT SYSTEMS

10.3.1 MIXING BLOCK FASTENER

Spare parts list for mixing block fastener of stroke-measurement system

Pos	K	Stk	Order No.	Designation
1		1	--	Mixing block fastener
2		1	9900338	Hexagon socket cylinder head screw
3		2	9921502	Lock washer, A6.0
4		2	9920103	Washer, A6.4, DIN 125
5		1	2340062	Mounting plate
6		1	2337346	Distance bush
7		1	2340065	Hexagon socket cylinder head screw

◆ = Wearing parts



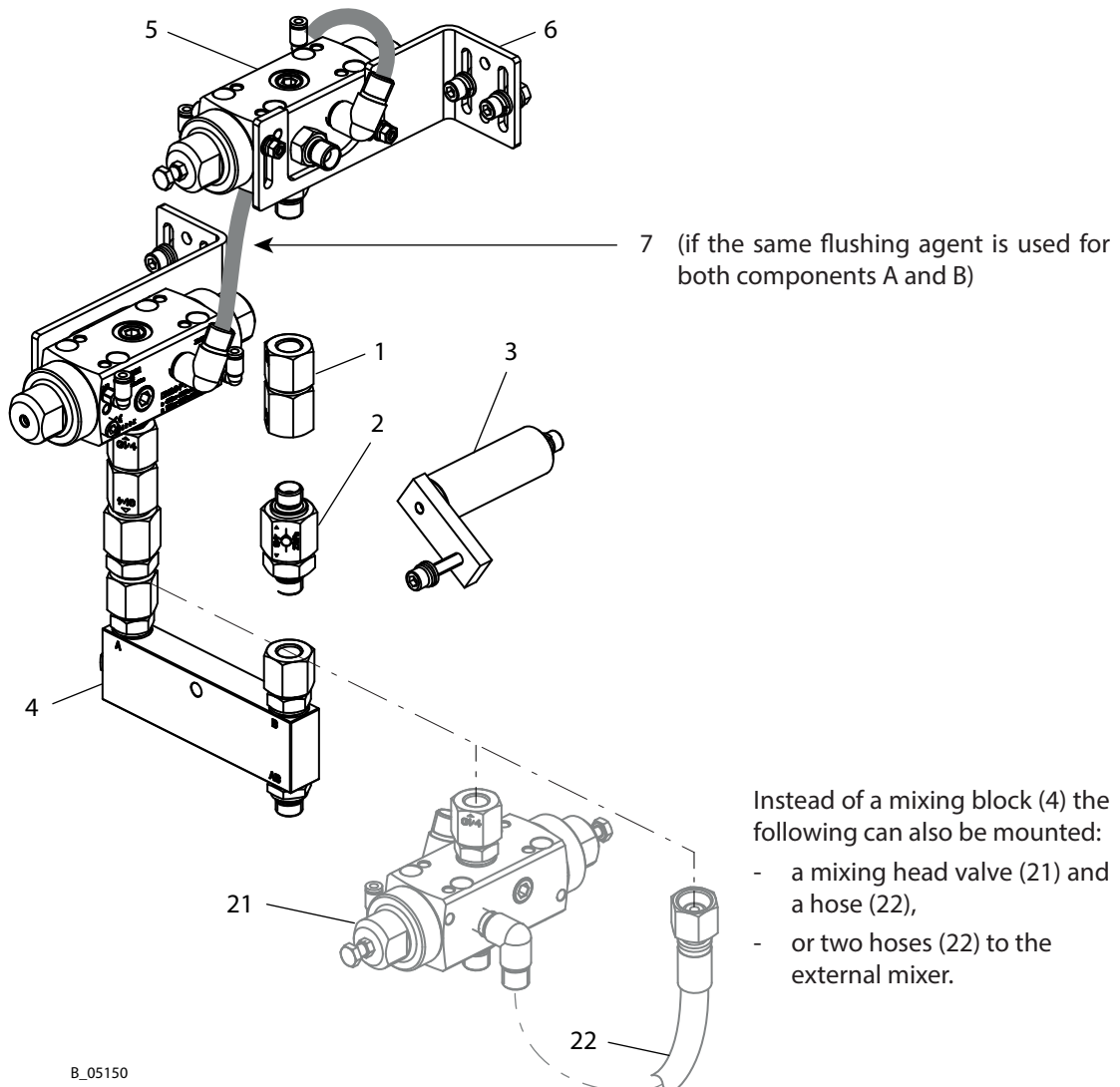
B_05146

10.3.2 COMPONENTS A/B

Spare parts lists for stroke measurement systems, components A and B with mixing block

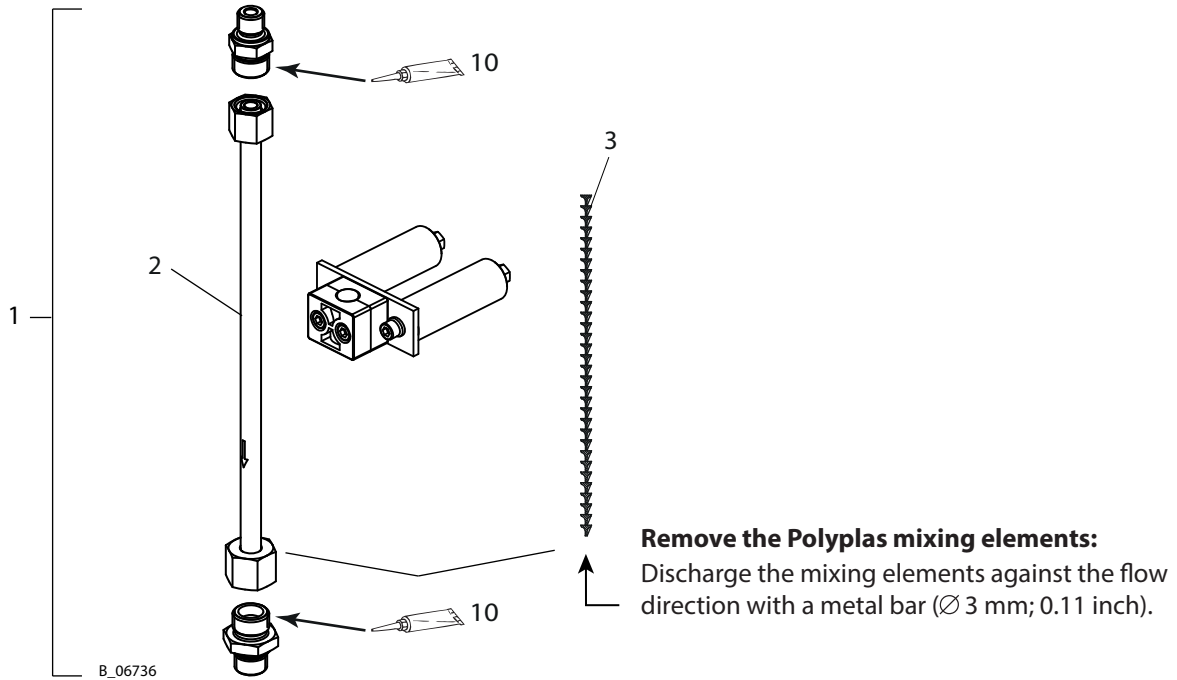
Pos	K	Stk	Order No.	Designation
1		1	2346531	Fitting, SF-FF-G1/4-G1/4-530 bar-SSt
2	◆	1	2329021	Non-return valve, DN6-PN270-G1/4"-SSt
3		1	--	Mixing block fastener (if A and B have stroke measurement), see Chapter 10.1.1 for details
4		1	--	Mixing block; for details, see Chapter 10.1
5		1	--	Valve; for details, see Chapter 7
6		1	--	Mounting bracket; for details, see assembly manual 2343345
7	◆	0-1	2337560	HP hose, DN4-PN350-PA 0.345 m

◆ = Wearing parts



B_05150

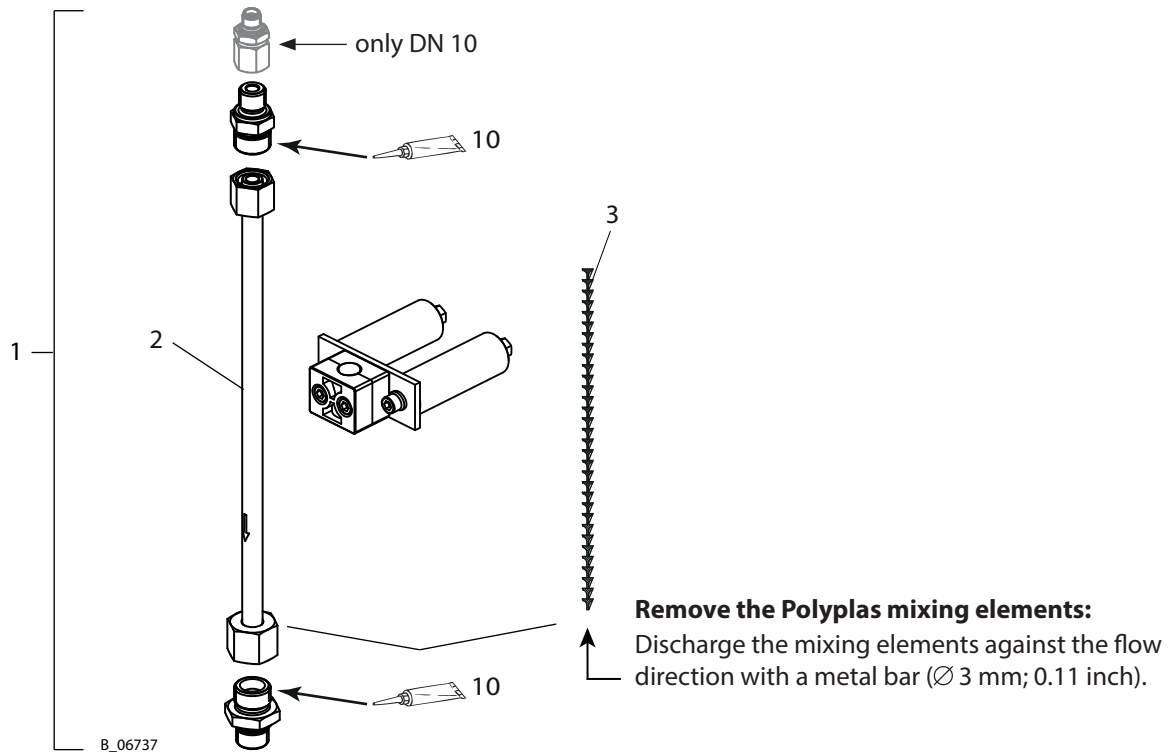
10.4 MIXING TUBES



DN 5				
Pos	K	Stk	Designation	Order No.
1		1	Mixing tube set, 5-32E ST/KS *	2343332
2	◆	1	Mixing tube, complete 5-32E ST/KS (including pos. 3), 194 mm; 7.64 inches	2365905
3	◆	2	Mixing element (16 single elements)	9999348
10		1	Molykote® DX grease	9992616

DN 6				Mixing elements consisting of	
Pos	K	Stk	Designation	Polyplas	Stainless steel 282 bar
				Order No.	Order No.
1		1	Mixing tube set, 6-32E ST/KS *	2343333	--
2	◆	1	Mixing tube, complete 6-32E ST/KS (including pos. 3), 268 mm; 10.6 inches	384083	2359013
	◆	1	Metal mixing tube DN6, complete (30 spirals), 275 mm; 10.83 inches. Maximum pressure 28.2 MPa; 282 bar; 4,090 psi		
3	◆	1.33	Mixing element (24 single elements)	9999136	
10		1	Molykote® DX grease	9992616	

* For details, see the mixing tube set assembly manual - Order No. 2343374.



DN 8				Mixing elements consisting of	
Pos	K	Stk	Designation	Polyplas Order No.	Stainless steel 226 bar Order No.
1		1	Mixing tube set, 8-32E ST/KS *	2343331	--
2	◆	1	Mixing tube, complete 8-32E ST/KS (including pos. 3), 317 mm; 12.5 inches	384085	2359014
	◆	1	Metal mixing tube DN8, complete (30 spirals), 366 mm; 14.4 inches. Maximum pressure 22.6 MPa; 226 bar; 3,277 psi		
3	◆	2.66	Mixing element (12 single elements)	9999349	
10		1	Molykote® DX grease	9992616	

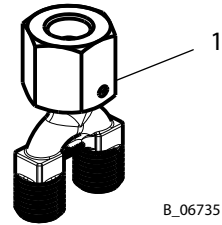
DN 10				Order No.
Pos	K	Stk	Designation	Order No.
1		1	Mixing tube set, 10-32E ST/KS *	2343330
2	◆	1	Mixing tube, complete 10-32E ST/KS (including pos. 3), 368 mm; 14.5 inches	384098
3	◆	1.33	Mixing element (24 single elements)	9999446
10		1	Molykote® DX grease	9992616

* For details, see the mixing tube set assembly manual - Order No. 2343374.

Mixing hoses: see Chapter 11.1

10.5 SPLITTER VALVE WITHOUT VALVES

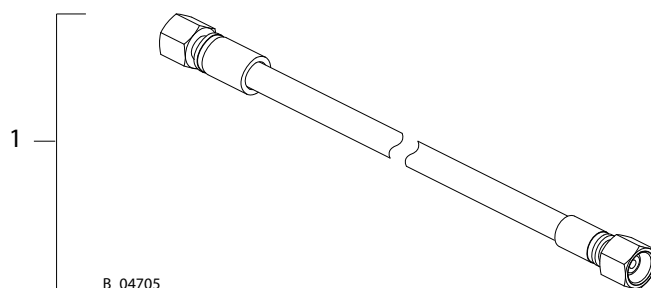
Pos	K	Stk	Order No.	Designation
1		1	2342597	Splitter valve



B_06735

11 HOSES AND FITTINGS

11.1 MIXING HOSES



Mixing hoses					Inner hose		Nominal pressure	Nominal length	Hose length	Pressure fitting	Number of single mixing elements
Pos	K	Stk	Order No.	Designation	∅		MPa bar psi	mm inch	mm inch		
1	◆	1	2340040	Mixing hose, DN 6-32 G 1/4 *	DN6	PA	32.5 325 4,714	455 17.9	420 16.5	G1/4" Straight	48
1	◆	1	2312402	Mixing hose, DN 10-32 G 3/8 **	DN10	PA	25 250 3,626	387 15.2	345 13.6	G3/8" Straight	32

◆ = Wearing parts

Mixing Hose, DN6

is used together with the following fitting:

Pos	K	Stk	Order No.	Designation
		1-2	3204611	Fitting, DF-MM-G1/4-G1/4-530 bar-SSt

Mixing Hose, DN10

is used together with the following fittings:

Pos	K	Stk	Order No.	Designation
		1	2331173	Fitting, DF-MM-G3/8-G1/4-530 bar-SSt → before the mixing hose
		1	2330775	Fitting, DF-MM-G3/8-G3/8-PN530-SSt → after the mixing hose

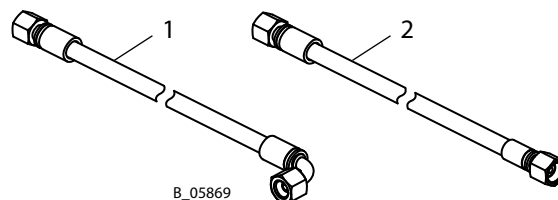
Mixing tubes

see Chapter 10.4.

11.2 PRODUCT HOSES MADE OF PA

Product hoses made of PA					Inner hose		Nominal pressure	Nominal length	Hose length	Pressure fitting
Pos	K	Stk	Order No.	Designation	∅		MPa bar psi	mm inch	mm inch	
2	◆	1	2337560	HP hose, DN4-PN350-PA G-G 0.345 m	DN4	PA	35 350 5,076	345 13.6	300 11.8	G1/4" Straight
2	◆	1	2369398	HP hose, DN4-PN350-PA G-G 0.395 m	DN4	PA	35 350 5,076	395 15.6	350 13.8	G1/4" Straight
2	◆	1	2339971	HP hose, DN4-PN350-PA G-G 0.705 m	DN4	PA	35 350 5,076	705 27.8	660 26.0	G1/4" Straight
2	◆	1	2332944	HP hose, DN6-PN325 PA G-G 15 m	DN6	PA	32.5 325 4,714	15,000 591	14,955 589	G1/4" Straight

◆ = Wearing parts

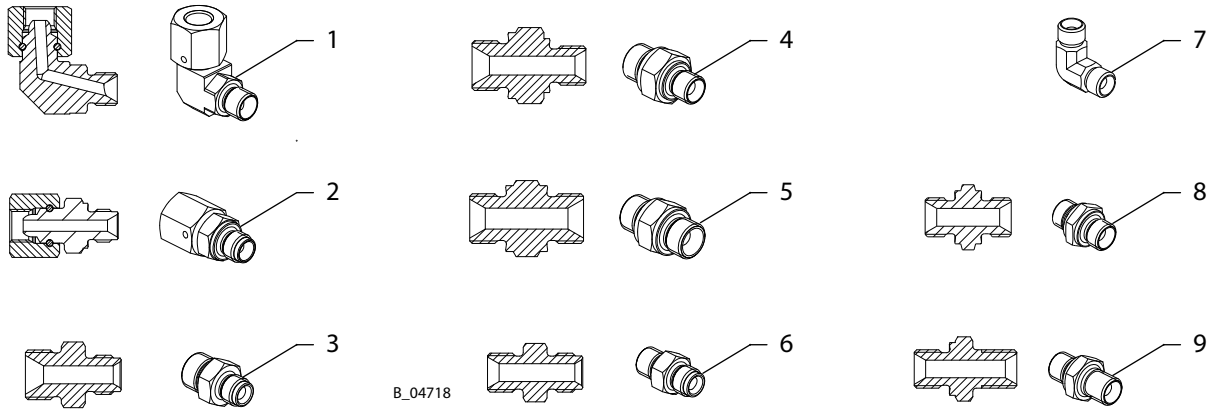


11.3 PRODUCT HOSES MADE OF FEP

Product hoses made of FEP					Inner hose		Nominal pressure	Nominal length	Hose length	Pressure fitting
Pos	K	Stk	Order No.	Designation	∅		MPa bar psi	mm inch	mm inch	
1	◆	1	2333791	HP hose, DN6-PN325 FEP W-G 0.67 m	DN6	FEP	32.5 325 4,714	670 26.4	625 24.6	G1/4" Angle bracket Straight
2	◆	1	2340038	HP hose, DN6-PN325 FEP G-G 0.505m	DN6	FEP	32.5 325 4,714	505 19.9	460 18.1	G1/4" Straight
2	◆	1	2333869	HP hose, DN6-PN325 FEP G-G 15 m	DN6	FEP	32.5 325 4,714	15,000 591	14,955 589	G1/4" Straight

◆ = Wearing parts

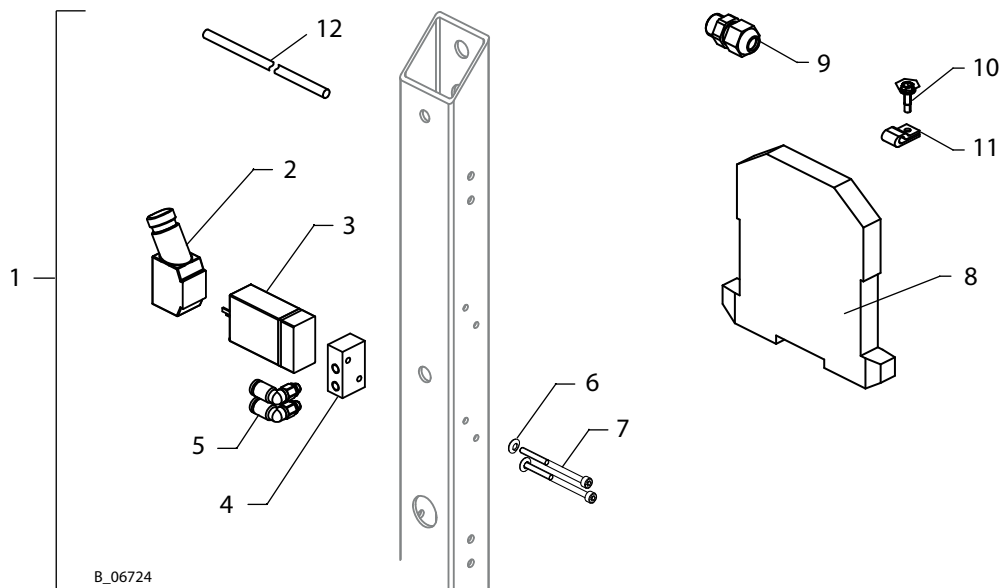
11.4 FITTINGS



Pos	K	Stk	Order No.	Thread 1 / seal	Thread 2 / seal	Nominal pressure
1		1	2331273	G1/4" inside 60° cone	G1/4" outside 60° cone	53 MPa; 530 bar; 7,687 psi
2		1	2332021	G1/4" inside 60° cone	G1/4" outside 60° cone Sealing edge, front	53 MPa; 530 bar; 7,687 psi
3		1	2331173	G3/8" outside 60° cone	G1/4" outside 60° cone Sealing edge, front	53 MPa; 530 bar; 7,687 psi
4		1	2325826	G3/8" outside 60° cone Sealing edge	G1/4" outside 60° cone Sealing edge	53 MPa; 530 bar; 7,687 psi
5		1	2330775	G3/8" outside 60° cone Sealing edge	G3/8" outside 60° cone Sealing edge	53 MPa; 530 bar; 7,687 psi
6		1	2331174	G1/4" outside 60° cone	G1/4" outside 60° cone Sealing edge, front	53 MPa; 530 bar; 7,687 psi
7		1	2328186	G1/4" outside 60° cone	R1/4" outside	25 MPa; 250 bar; 3,626 psi
8		1	3204611	G1/4" outside 60° cone Sealing edge	G1/4" outside 60° cone Sealing edge	53 MPa; 530 bar; 7,687 psi
9		1	2330774	G1/4" outside 60° cone Sealing edge	1/4" NPS outside 60° cone	53 MPa; 530 bar; 7,687 psi

12 MISCELLANEOUS

12.1 ELECTRO-PNEUMATIC VALVES FOR EXPLOSIVE AREAS



Electro-pneumatic valves for explosive areas are required:

- for air supply connections of dosing valves, Ex
- for more air supply connections with connection set from 17 m; 669 inches.

Pos	K	Stk	Order No.	Designation
1		1	2382522	Dosing connection, EX
2		1	9956102	Device socket outlet
3		1	9956099	3/2-way valve, 6106 Ex i
4		1	9956103	Single connection plate
5		2	9992724	Male stud elbow
6		2	2338526	Contact washer, M3
7		2	2340054	Hexagon socket cylinder head screw
8		1	3156559	Zener barriers, Z728
9		1	3156823	Cable screw connection, ST M12-1.5
10		1	9907220	Hexagon drilling screw
11		1	9955804	Grounding terminal
12		1 m	9982072	Hose, black PUR 4/2.7
--		5	9951319	End-sleeve with insulation
-		2 m	3110388	Flexible wire 0,75 mm ² , dark blue

◆ = Wearing parts

12.2 CONNECTION SET (HOSES AND CABLES)

Spare parts list for connection set of fluid cabinet – control cabinet

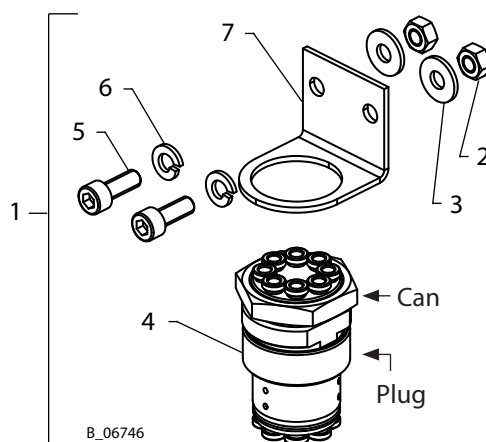
Pos	K	Stk	Order No.	Designation
1		1	--	Connection set of fluid cabinet – control cabinet
2		m	9955900	Cable for flow meter, $3 \times 0.75 \text{ mm}^2$
3		m	9955901	Cable for flow meter with Dual Pickup, $5 \times 0.75 \text{ mm}^2$
4		m	2362458	Cable for Coriolis
5		m	9956160	Cable to Ex i valve and lacquer monitoring, $3 \times 0.75 \text{ mm}^2$, 2 black, 1 green-yellow protective conductor
6		m	9951211	Grounding cable, green/yellow, 4 mm^2
7	◆	m	9982016	Protective hose, small (up to 16 air hoses), $\varnothing 40 \text{ mm}$
8	◆	m	2344007	Protective hose, large (as of 17 air hoses), $\varnothing 48\text{--}92 \text{ mm}$
9		m	9987076	Hose, 10/7 for atomizing air, \varnothing outside 10 mm, inside 7 mm
10		m	9982079	Hose, 6/4 (air supply of Ex i valves), \varnothing outside 6 mm, inside 4 mm
11		m	9982072	Hose, 4/2.5, \varnothing outside 4 mm, inside 2.5 mm
12		1–3	2384407	Multiple coupling, serie 1800 D4 8-fold (up to 8 air hoses), for details, see Chapter 12.2.1

◆ = Wearing parts

12.2.1 MULTIPLE COUPLING FOR 8 AIR HOSES

Pos	K	Stk	Order No.	Designation
1		1	2384407	Multiple coupling, serie 1800 D4 8-fold (up to 8 air hoses)
2		2	9910102	Hexagon nut
3		2	9925031	Washer, 6.4
4		1	2374579	Multiple coupling, serie 1800 D4 8-fold
5		2	9900325	Hexagon socket cylinder head screw
6		2	9921502	Spring washer
7		1	2384314	Supporting bracket

◆ = Wearing parts



WAGNER



Document No. 11197481
Version -

Order No. 2373083
Version 04/2017

Germany

J. WAGNER GmbH
Otto-Lilienthal-Str. 18
Postfach 1120

D- 88677 Markdorf

Phone +49/ (0)7544 / 5050
Telefax +49/ (0)7544 / 505200
E-mail ts-liquid@wagner-group.com

Switzerland

Wagner International AG
Industriestrasse 22

CH- 9450 Altstätten

Phone +41/ (0)71 / 757 2211
Telefax +41/ (0)71 / 757 2222

More contact addresses:
www.wagner-group.com
Company/Locations/WAGNER worldwide

Subject to changes without notice